

1PC BALL VALVE THREADED END 1000WOG



FEATURES

1000PSI / PN16~PN63

Size: 1/4" ~ 3"

Materials: WCB, S.S.304(CF8), S.S.316(CF8M)

Reduce port, fully opening or closing

Blow-out proof stem, reliable sealing

Simple structure, easy operation and maintenance

PED97/23/EC (CE0035) approved

Investment casting approved to AD2000-WO certificate

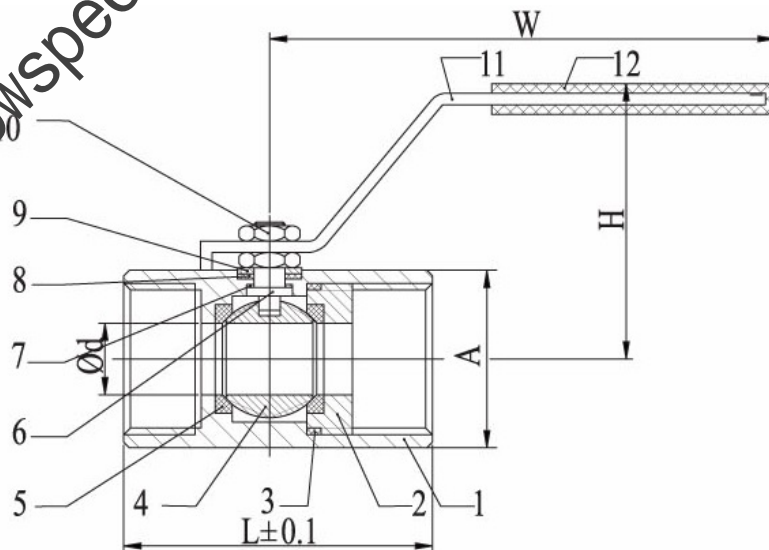
Threaded: G, NPT, PT, Rp, Rc (ASME B1.20.1, BS21/2799, DIN2999/259, ISO228-1, JIS B 0203, ISO7/1)

Inspection & testing: API598, EN12266, DIN3305

Design: ASME B16.34

Applicable medium: water, oil, gas, corrosive liquids

Applicable temperature: -29°C~120°C (higher temperature is available upon request)





PARTS AND MATERIALS

ITEM	PARTS	MATERIALS
1	Handle cover	Plastic
2	Handle	SUS304
3	Locking device	SUS304
4	Stem screw	SUS304
5	Spring washer	SUS304
6	Stem	SUS304/SUS316
7	Washer	SUS304
8	Stem packing	PTFE
9	Thrust Washer	PTFE
10	Cap	CF8/CF8M, SS304, SS316
11	Body	CF8/CF8M, SS304, SS316
12	Seat	RPTFE
13	Ball	CF8/CF8M, SS304, SS316
14	Seat	RPTFE

MAIN CONNECTION DIMENSIONS

Size	1/4"	3/8"	1/2"	3/4"	1"	1-1/4"	1-1/2"	2"	2-1/2"	3"
D	5	7	9.2	12.7	15	20	25	32	38	50
H	33	35	40	44	50	57	64	70	70	77
W	68.5	90	98	98	111	111	139	139	189	189
L	39	44	57	59	71	78	83	100	127	153

NOTES:

As we are constant endeavoring to improve the performance of our equipment.

The company reserves the right to make alteration from time to time and equipment differ from that detailed in this brochure.