

2/2-WAY PISTON-OPERATED ANGLE-SEAT VALVES FOR NEUTRAL AND AGGRESSIVE LIQUIDS AND GASES

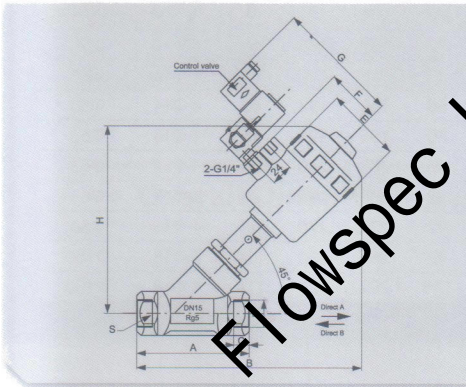
Specification

| | |
|-----------------------|--------------------------------------|
| Medium Temperature | -10°C~+180°C |
| Ambient Temperature | -10°C~+60°C |
| Max. Working Pressure | 1.6MPa |
| Working Medium | Neutral and aggressive liquid, gases |
| Working Pressure | 0.3~0.8MPa |
| Port Size | DN15~DN65 |
| Body Material | SS304, SS316 |
| Sealing Material | PTFE |

Thread Angle Seat Valves



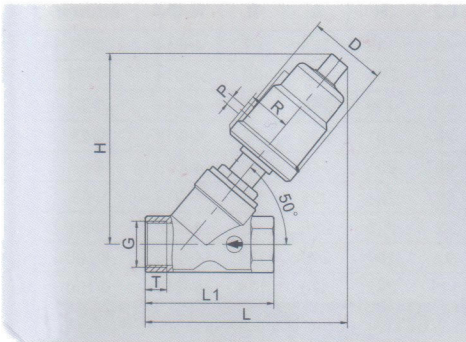
Plastic actuator



Dimension Sheet

| Type | Actuator (mm) | D | A | B | C | ΦE | F | G | H |
|------|---------------|----------|-----|-----|----|-----|----|-----|-----|
| DN15 | 50 | ZG1/2" | 85 | 173 | 12 | 64 | 44 | 112 | 137 |
| DN20 | 50 | ZG3/4" | 95 | 178 | 12 | 64 | 44 | 112 | 145 |
| DN25 | 63 | ZG1" | 105 | 212 | 14 | 80 | 52 | 120 | 173 |
| DN32 | 63 | ZG1 1/4" | 118 | 236 | 16 | 80 | 52 | 120 | 189 |
| DN40 | 63 | ZG1 1/2" | 130 | 230 | 18 | 80 | 52 | 120 | 189 |
| DN50 | 80 | ZG2" | 150 | 238 | 20 | 100 | 52 | 120 | 250 |
| DN65 | 100 | ZG2 1/2" | 155 | 252 | 26 | 126 | 73 | 140 | 300 |
| DN80 | 100 | ZG3" | 220 | 368 | 30 | 126 | 73 | 140 | 340 |

SS actuator



| Type | Actuator (mm) | D | R | P | G | H | L | L1 | T |
|------|---------------|----|------|--------|----------|-----|-----|-----|------|
| DN15 | 50 | 62 | 33.5 | ZG1/8" | ZG1/2" | 126 | 133 | 68 | 11 |
| DN20 | 50 | 62 | 33.5 | ZG1/8" | ZG3/4" | 131 | 137 | 75 | 14 |
| DN25 | 63 | 76 | 42 | ZG1/8" | ZG1" | 165 | 174 | 90 | 15 |
| DN32 | 63 | 76 | 42 | ZG1/8" | ZG1 1/4" | 175 | 188 | 110 | 17.5 |
| DN40 | 63 | 76 | 42 | ZG1/8" | ZG1 1/2" | 178 | 190 | 115 | 17.5 |
| DN50 | 80 | 96 | 52 | ZG1/8" | ZG2" | 195 | 205 | 135 | 20 |