



LUOKAI
WE MAKE FLOW BETTER

阀门电动装置

Valve Electric Actuators

QT Quarter-turn

QT 型部分回转



Flowspec Luokai Industrial Co., Ltd.

Shanghai Luokai Industrial Co., Ltd.

Add: No. 218 Huting Road (N), Shanghai, China 201615

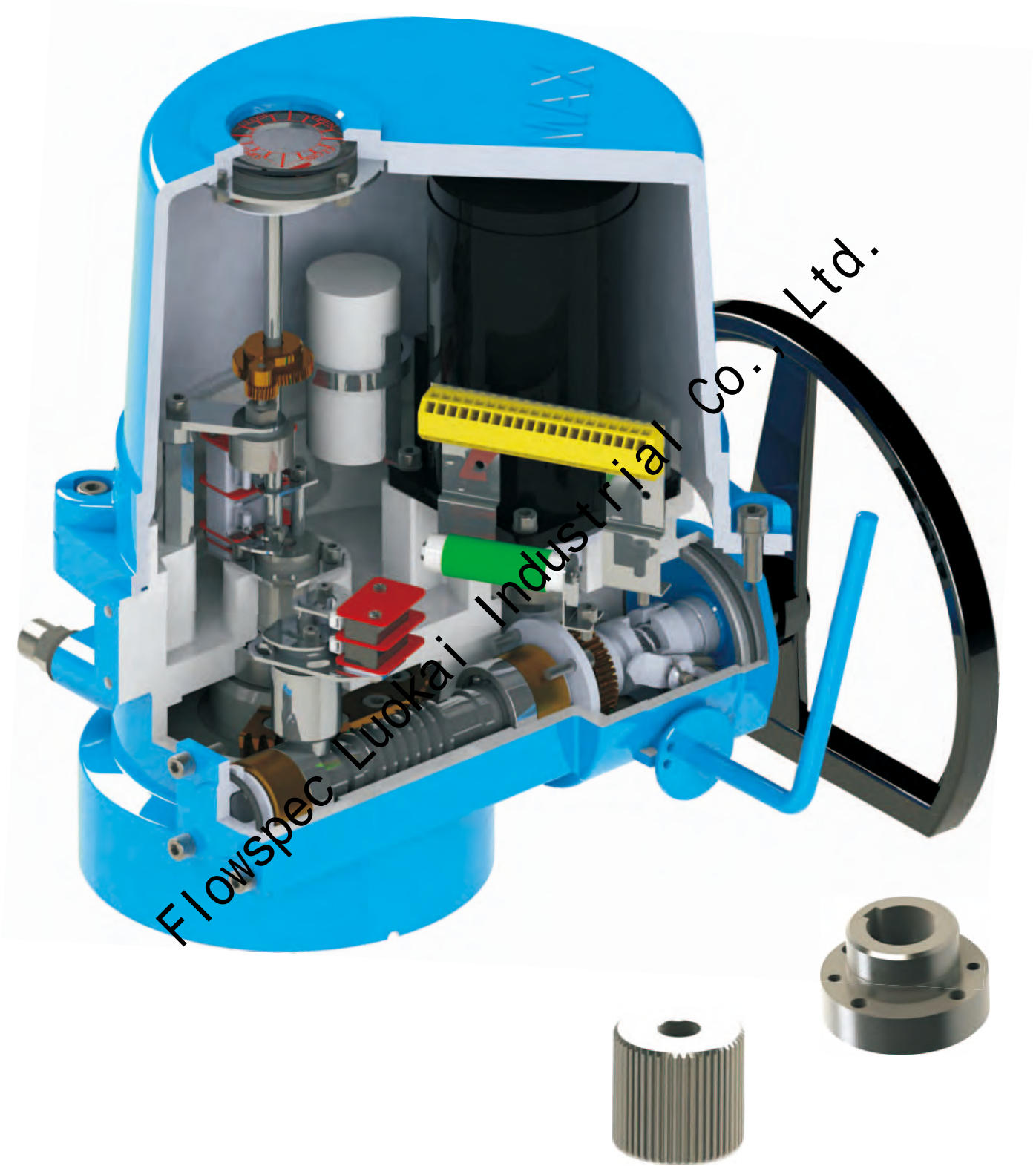
Tel: +86 21 5603 2171

Fax: +86 21 3325 0914

E-mail: sales@lokvalve.com

www.lokvalve.com

QT Quarter-turn Valve Electric Actuators NEUMAX



Flowspec Luokai Industrial Co., Ltd.

QT Quarter-turn Valve Electric Actuators NEUMAX

QT型 (NEUMAX) 部分回转阀门电动装置是我公司在借鉴和吸收国外先进技术的基础上,研制的换代型产品。适用于控制蝶阀、球阀、旋塞阀等做90° 回转的阀门。该产品箱体采用压铸铝,外形美观、体积小、重量轻,具有高效率、高可靠性、高防护性能、低噪音等特点。可现场操作,也可远距离控制。可广泛用于石油、化工、发电厂、水处理、造纸等各行业。

该产品的防护等级为IP67。特殊订货可达IP68可生产基本型,带现场操作按钮灯盒型,整体型,整体调节型和防爆型(防爆等级为ExdIIBT4 Gb)及整体防爆型。

The QT range, a updated product of our Company, is a quarter-turn electric actuator which has absorbed foreign advanced technology. It can operate with butterfly valve, ball valve and cock valve and other kinds of quarter-turn valves.

Its case body is made of die-casting aluminum, compact and light, which boasts of a striking design.

QT range is featured by high efficiency, high reliability, high protection class and low noise. Both remote control and local control are available. This product has been applied to many fields, such as petroleum, chemicals, electricity, water treatment and paper-making industry.

The protection class is IP67 and if required, IP68 is also available. QT range includes QT Standard, QT Integral (QT. IN), QT Modulating Integral, QT Explosion proof (QT.Ex) (Explosion-proof grade is ExdIIBT4 Gb) and QT Intergral Explosion proof (QT.Ex. IN).

QT0-QT4/JS型 (220V单相电机) 产品技术参数

Technical parameters of QT0-QT4/JS products (220V, Single-phase motor)

型号 Type	规格 Model	工作 转矩 Working Torque (N·m)	输出 转速 Output Speed (r/min)	运行 时间 Operating Time (s)	最大阀 杆直径 Max Dia of stem (mm)	电机 功率 Motor power (kW)	电机电流 Current of Motor (A)		电 容 Capacitance uF/450V	手轮转 圈 数 Hand wheel Turns	参 考 重 量 Reference net weight (kg)
							额 定 Rated	堵 转 Locked Rotor			
QT0	QT05	50	0.8	18	14	0.01	0.3	0.5	1.2		2
QT1	QT04	40	0.86	17	14	0.01	0.45	0.7	4	8.5	6
	QT06	60			22	0.015	0.55	0.75	7		9
	QT09	90				0.025	0.7	1.1	7		10
QT2	QT05	50	0.73 1.5	20 10	22	0.025	0.7	1.1	7	10.5	12
	QT10	100				0.025	0.7	1.1	7		
	QT15	150			32	0.04	1.1	1.3	10		13
	QT20	200				0.04	1.1	1.3	10		
QT3	QT30	300	0.57 1.2	26 13	32	0.04	1.2	1.5	10	12.8	17
	QT40	400				0.06	1.2	1.8	12		18
	QT50	500				0.09	1.6	2.1	15		19
QT4	QT60	600	0.57 1.2	26 13	42	0.09	2.0	3.2	15	14.5	22
	QT80	800				0.18	3.0	4.0	30		23
	QT100	1000				0.2	3.3	4.5	30		25
QT4/JS	QT150	1500	0.17 0.34	90 45	50	0.18	3.0	4.0	20	43	48
	QT200	2000				0.2	3.3	4.5	20		50
	QT250	2500				0.2	3.3	4.5	20		50

1. 转速 > 1r/min, 输出轴不自锁, 当阀门有自锁要求时应予以注意。
2. 产品为整体型时整机重量增加3kg。

1. When the output speed is no less than 1r/min, the shaft will not be self-locking.

Please pay attention when the valve is required to be self-locked.

2. The weight of the product is added 3kg for the QT Integral.

QT Quarter-turn Valve Electric Actuators NEUMAX

QT1-QT4/JS型 (380V三相电机) 产品技术参数

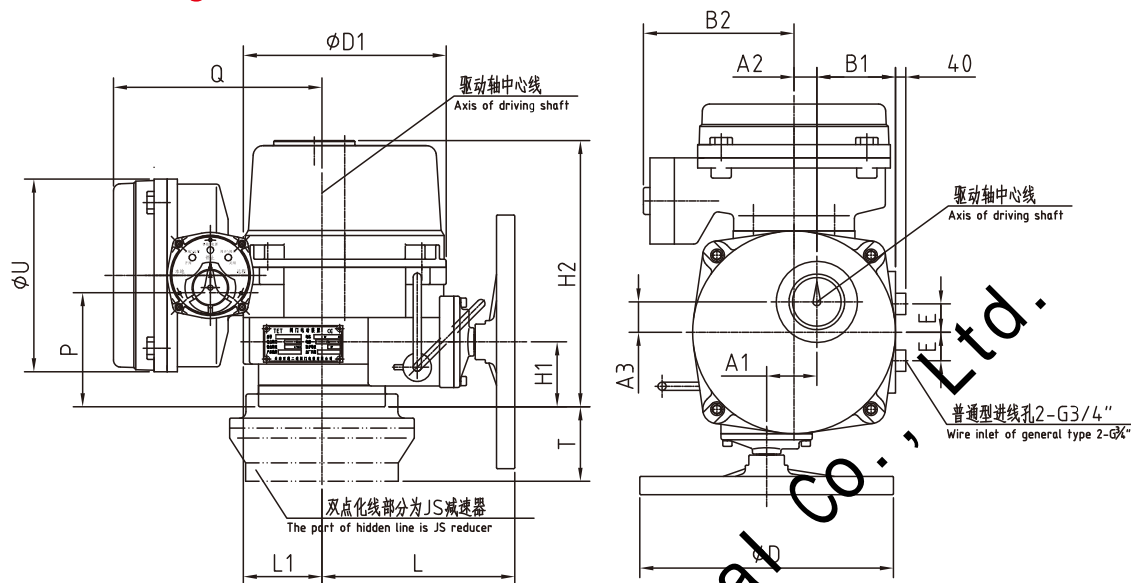
Technical parameters of QT1-QT4/JS products (Three-phase motor)

项目 Item 型号 Type	规格 Model	工作转矩 Working Torque (N.m)	输出转速 Output Speed (r/min)	最大阀杆 直 径 Max Dia of stem (mm)	电机功率 Motor power (kW)	电机电流 Current of Motor (A)		90° 运行时间 Operating time for 90° turn (s)	参考重量 Reference Net weight (kg)
						额 定 Rated	堵 转 Locked Rotor		
QT1	QT06-1	60	1	22	0.025	0.3	0.6	15	9
	QT09-1	90			0.025				
QT2	QT05-1	50	1	22	0.025	0.3	0.6	18	10
	QT10-1	100	1		0.025			18	10
	QT10-2		2		0.04	0.6	0.9	9	12
	QT15-1	150	1	32	0.04	0.6	0.9	18	12
	QT15-2		2		0.06			9	
	QT20-1	200	1	32	0.06	0.7	1.1	18	13
	QT20-2		2		0.06			9	
QT3	QT30-0.5	300	0.5	32	0.06	0.5	1.0	24	17
	QT30-1		1		0.06			12	
	QT30-2		2		0.09	6			
	QT40-0.5	400	0.5	32	0.09	0.8	1.7	24	18
	QT40-1		1		0.09			12	
	QT40-2		2		0.09			6	
QT4	QT60-0.5	600	0.5	32	0.12	1.0	2.0	28	22
	QT60-1		1					14	
	QT60-2		2		7				
	QT80-0.5	800	0.5	42	0.18	1.5	2.5	28	25
	QT80-1		1					14	
	QT80-2		2					7	
	QT100-0.5		0.5					28	
	QT100-1	1000	1	14					
QT4/JS	QT150-0.3	1500	0.3	50	0.18	1.3	2.2	45	48
	QT200-0.3	2000			0.20	1.8	3.0		50
	QT250-0.3	2500							

1. 输出转速为2r / min时，产品输出轴不自锁。当阀门有自锁要求时应给予注意。
 2. 产品为整体型时整机重量增加4kg。
1. As the output speed is 2r/min, the shaft will not be self-locking. Please pay attention when the valve is required to be self-locked.
 2. The weight of the product is added 4kg for the QT Integral.

QT Quarter-turn Valve Electric Actuators NEUMAX

QTI ~ QT4/JS系列整体型部分回转阀门电动装置 QTI ~ QT4/JS Integral Quarter-turn Valve Electric Actuators



型号 Type	A1	A2	A3	B1	B2	D	D1	E	H1	H2	L	L1	T	P	Q	U
QT1	44	17	36	68	150	200	170	27.5	62	257	181	62	/	109	177	190
QT2	49.5	22.5	30	77.5	150	200	200	27.5	64	263	190	85	/	113	198	190
QT3	60	33	35	77	150	200	220	27.5	70	304	205	88	/	119	203	190
QT4	70	43	38	92	150	250	260	27.5	78	342	228	106	/	127	220	190
QT4/JS	70	43	38	92	150	250	260	27.5	78	342	228	106	112	127	220	190

注：QT4/JS外形图可参见11页

按电气控制可分为：

- 基本型：可选带行程、力矩无源接点，输出4~20mA 阀位信号。
- 带现场操作按钮灯型：可选带行程、力矩无源接点，输出4~20mA 阀位信号。
- 整体型：带控制电器元件和现场操作旋钮及现场-远控选择旋钮灯盒。可选带行程、力矩无源接点，现场-远控工作状态无源接点，输出4~20mA 阀位信号。鉴断相及自动换相保护装置等。
- 整体调节型：带电器元件调节板元件和现场操作按钮及现场-远控选择旋钮灯盒。可选带行程、力矩无源接点，现场-远控工作状态无源接点。鉴断相及自动换相保护装置等。

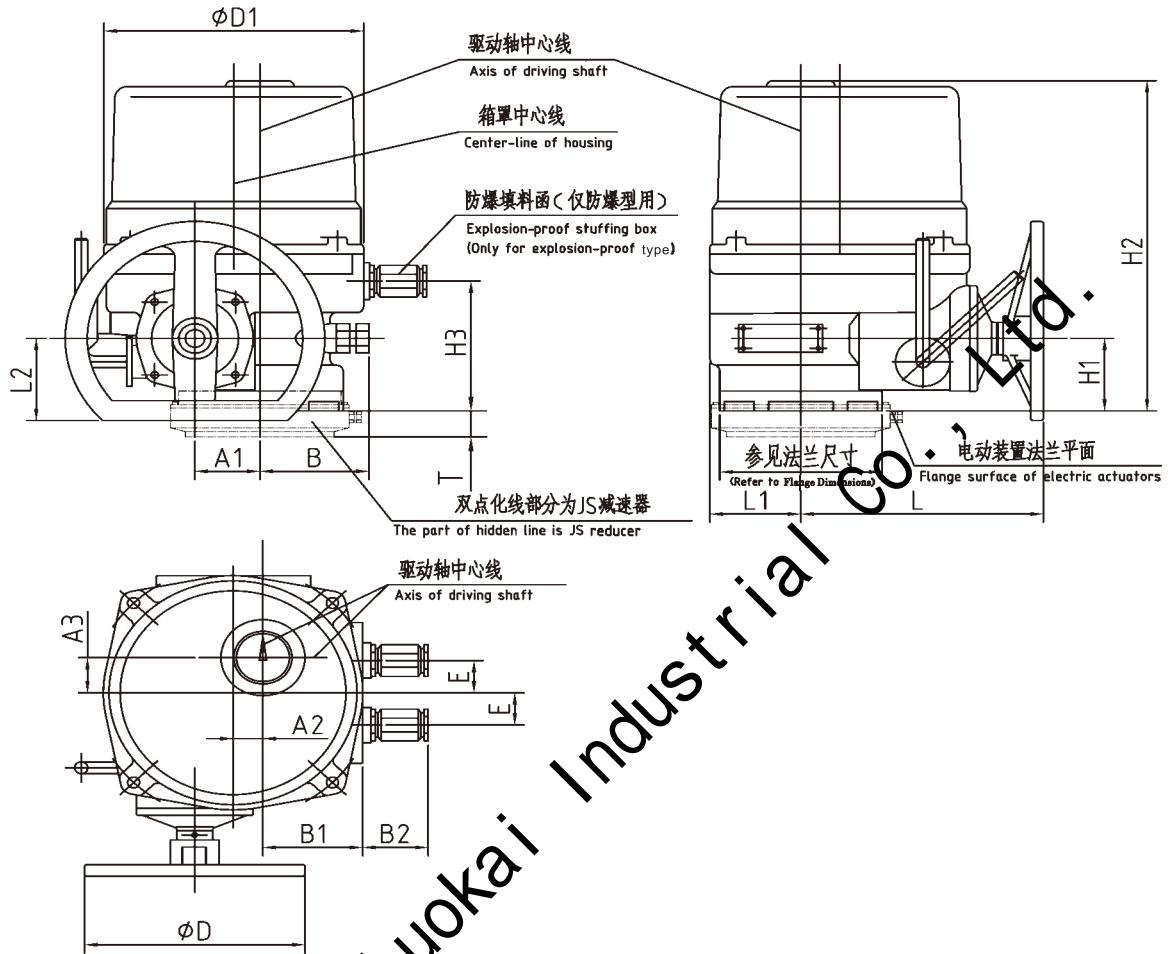
Attention: Please turn to Page11 for the drawing of QT4/JS.

QT Range could be classified into four types according to electrical control:

- QT Basic type: both stroke and torque with dry contact are available. Valve position signal:4-20mA.
- Local operation button in the light box: both stroke and torque with dry contact are available. Valve position signal:4-20mA.
- QT Integral: Provided with electric components and local operating buttons;Local/Remote Button is also provided. Stroke and torque with dry contact; Local/Remote Button with dry contact; valve position signal: 4-20mA;provided with phase demodulation, phase loss and commutation.
- QT Modulating Integral: with electric components and components on the adjusting plates; with local operating buttons including Local/Remote button. Limit and torque with dry contact; Local/Remote Button with dry contact; Please-sequence discrimination and automatic phase changing-over protection device.

QT Quarter-turn Valve Electric Actuators NEUMAX

QT1 ~ QT4/JS (QT1Ex ~ QT4/JS.Ex) 系列 (防爆型) 部分回转阀门电动装置
QT1 ~ QT4/JS (QT1Ex ~ QT4/JS.Ex) Series (explosin-proof type) Quarter-turn Valve Electric Actuators



防爆填料函
Explosion-proof stuffing box

Φ尺寸 Dimension	用途 Usage
Φ 17.8	用于机电缆 Used for power cable
Φ 17.8	用于控制电缆 Used for control cable

型号 Type	A1	A2	A3	B	B1	B2	D	D1	E	H1	H2	H3	T	L	L1	L2
QT1 (QT1Ex)	44	17	36	75	68	40 (60)	200	170	27.5	62	257 (267)	109	/	181	62	76
QT2 (QT2Ex)	49.5	22.5	30	85	77.5		200	200		64	263 (272)	113	/	190	85	76
QT3 (QT3Ex)	60	33	35	100	77		220	70		304 (308)	119	/	205	88	76	
QT4 (QT4Ex)	70	43	38	115	92		250	260		78	342 (347)	127	/	228	106	110
QT4/JS (QT4/JS.Ex)				78		342 (347)			127	112						

注：QT4/JS(QT4Ex/JS)外形图可参见11页
 Please turn to page 11 for drawing of QT4/JS

QT Quarter-turn Valve Electric Actuators NEUMAX

QT1Ex.IN ~ QT4/JSEx.IN 防爆整体型部分回转阀门电动装置

QT1Ex.IN~QT4 / JSEx.IN系列防爆整体型阀门电动装置产品依据GB3836.1-2010《爆炸性环境第1部分：设备通用要求》和GB3836.2-2010《爆炸性环境第2部分：由隔爆外壳“d”保护的设备的有关规定进行设计制造的机电一体化产品，并经过国家认定的防爆审查机关审查、实验、认可，并获得防爆合格证。防爆标志为：Exd IIBT4Gb，产品共有5种机座号：QT1Ex.IN，QT2Ex.IN，QT3Ex.IN，QT4Ex.IN，QT4 / JS.Ex.IN，其中技术参数、连接尺寸参照普通型。

QT1Ex.IN-QT4/JSEx.IN Explosion-Proof Ingegrate Quarter-turn Valve Electric Actuator

QT 1.Ex.IN-QT4/JS Ex.IN. explosion proof electric actuators are designed and manufactured on the basis of GB3836.1-2010 《General Requirement for the Equipment Used in Explosion Environment Part I 》 and GB3836.2-2010 《Equipment Protected by Explosion-proof Enclosure "d" Explosion Environment Part II 》 .

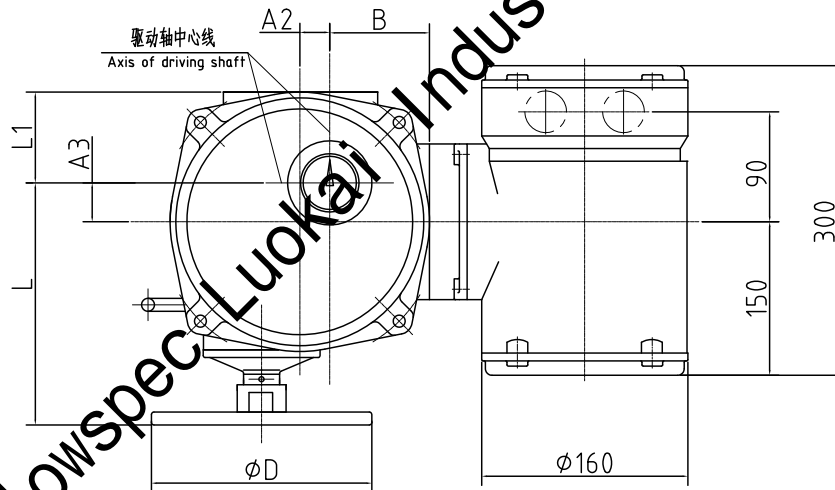
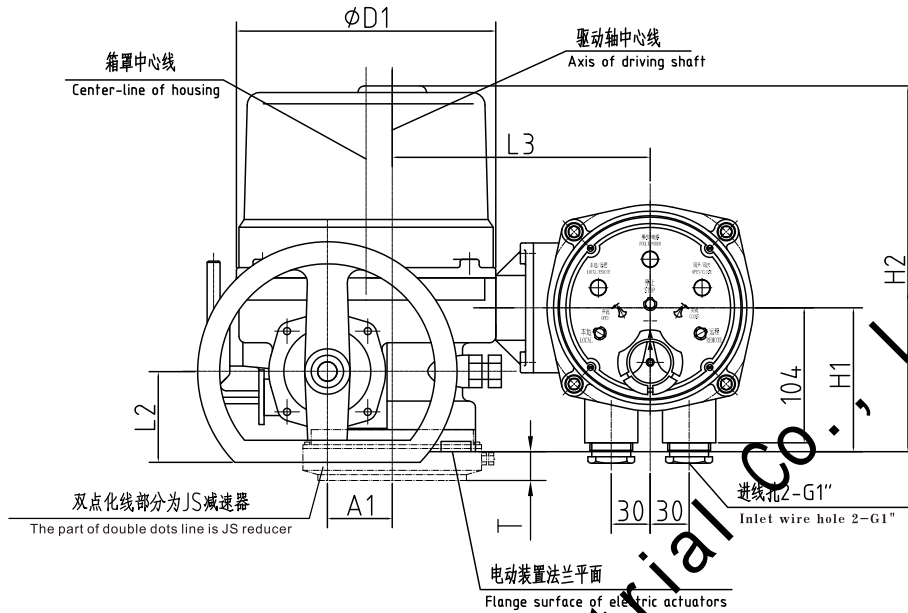
Investigated and examined by the national-recognized Explosion-proof censorship, this range has achieved the Conformity Certificate of Protection. Exd II BT4 is the explosion mark. According to motor frame No., this range can be divided into five kinds which are QT1Ex.IN, QT2Ex.IN, QT3Ex.IN, QT4Ex.IN and QT4/JS.Ex.IN. Please refer to the Standard Type for technical parameters and connecting size.



Flowspec Luokai Industrial Co., Ltd.

QT Quarter-turn Valve Electric Actuators NEUMAX

QT1Ex.IN-QT4/JSEx.IN 防爆整体型外形尺寸 QT1Ex.IN-QT4/JSEx.IN Explosion-proof Integral Dimension



型号 Type	A1	A2	A3	B	D	D1	H1	H2	T	L	L1	L2	L3
QT1Ex.IN	44	17	36	68	200	170	109	267	/	181	49	76	188
QT2Ex.IN	49.5	22.5	30	77.5	200	200	113	272	/	190	70	76	200
QT3Ex.IN	60	33	35	77		220	119	308	/	205	75	76	
QT4Ex.IN	70	43	38	92	250	260	127	347	/	228	92	110	212
QT4/JSEx.IN							127	347	112				

注：QT4/JS.IN(QT4Ex/JS)外形图可参见11页
Please turn to page 11 for drawing of QT4/JS

QT Quarter-turn Valve Electric Actuators NEUMAX

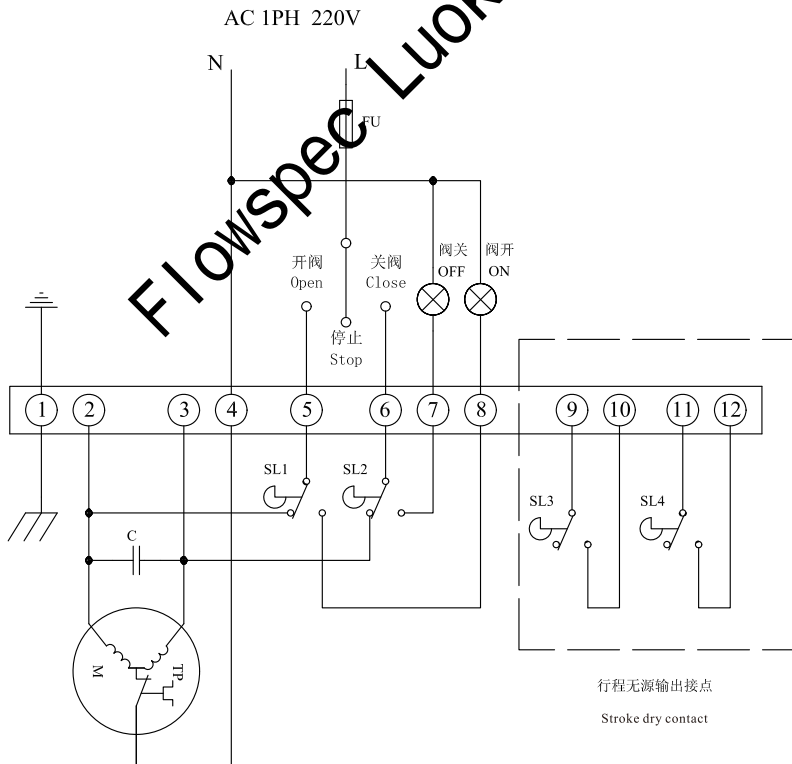
QT0 型部分回转阀门电动装置

QT0 型阀门电动装置是专门为小型球、蝶阀而设计的小型电动装置，也是QT系列中最小的一个规格。该产品为压铸铝喷涂外壳，外形美观。具有体积小($\phi 115 \times 145$)，重量轻(整机重量2kg)、高效率(工作转矩50N.m)、高性能(采用10W阀门专用电机)、高防护性能(IP67)、低噪音等特点。可广泛用于建筑、化工、造船、造纸等行业。

QT0 Quarter-turn Valve Electric Actuator

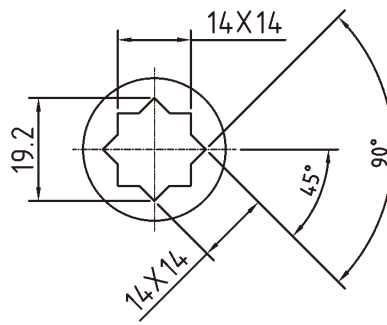
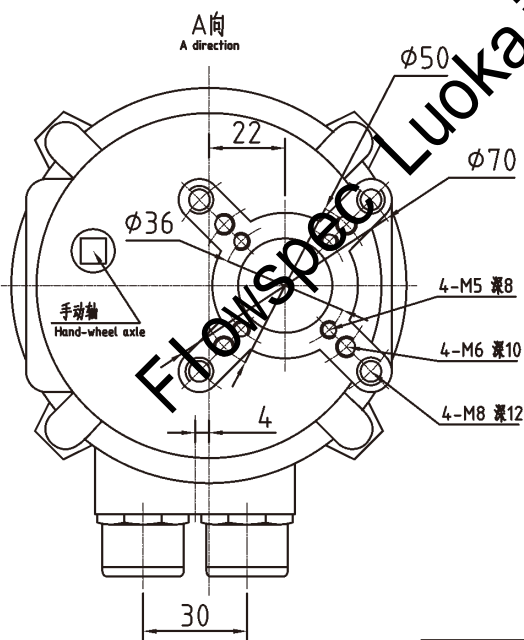
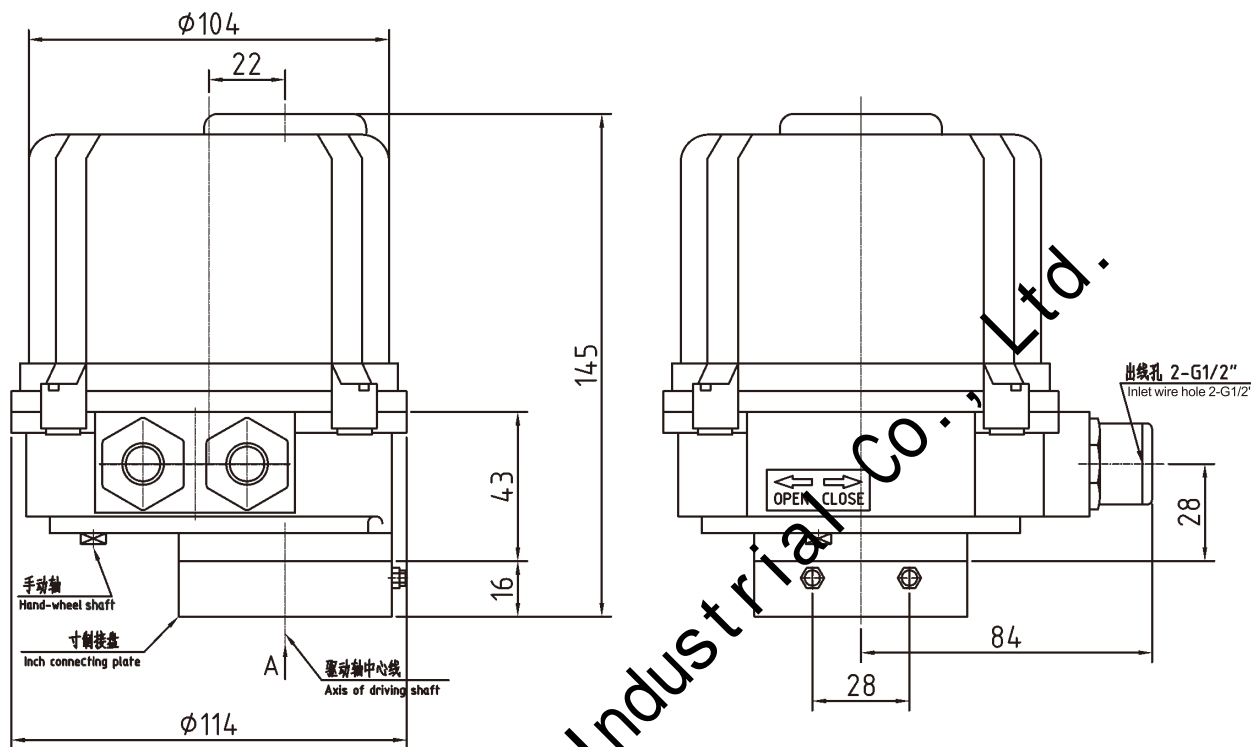
QT0 electric actuator, which is the minimum specification of the QT series, is specially designed for small-sized ball valve and butterfly valve. QT0 boasts of a striking design, with a die-casting aluminum enclosure. This product is featured by small size ($\phi 115 \times 145$), light weight (2kg for the entire product), high efficiency (working torque 50N.m), high capability (applying 10w motor power), with a relatively high protection degree (IP67) and low noise. This product can be applied to architecture, chemical engineering, ship building, and paper-making industry.

QT0 型电气原理图 (AC220V) QT0 Electrical Schematic Diagram (AC220V)



QT Quarter-turn Valve Electric Actuators NEUMAX

QT0 型外形及法兰尺寸
QT0 outline and flange dimension



法兰号为F03、F05、F07
连接方孔为14×14，孔深20
Flange number F03.F05.F07
Connecting bore 14x14,depth 20

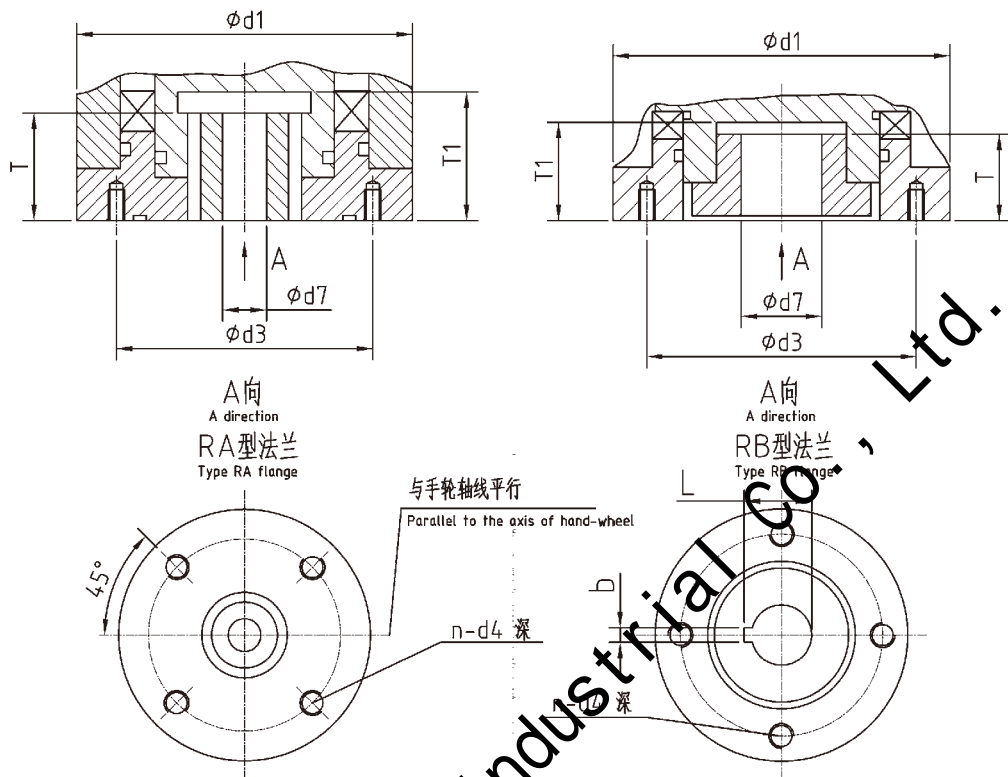
寸制法兰尺寸
Inch flange dimension

寸制接盘 Inch connecting plate	φ d1	φ d3	φ d7	b	L	T	n-d4
2"	82	57.5	12.6	3	14	32	4-M6 深10 4-M6 depth 10

详见第12页
See details 12th Page

QT Quarter-turn Valve Electric Actuators NEUMAX

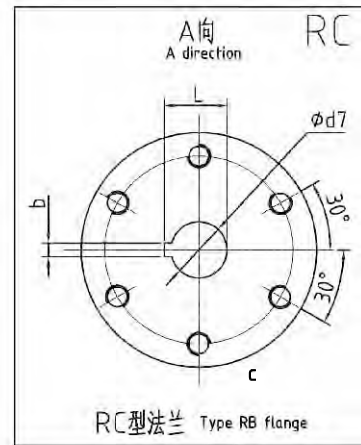
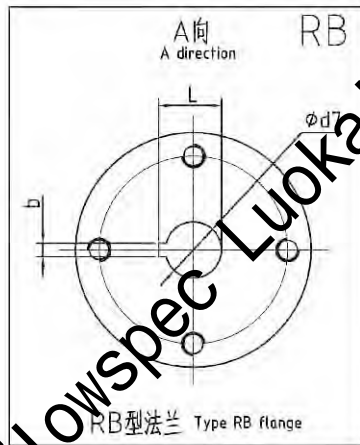
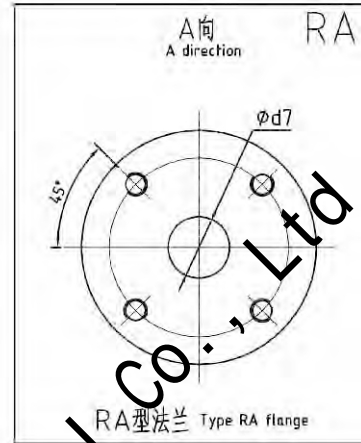
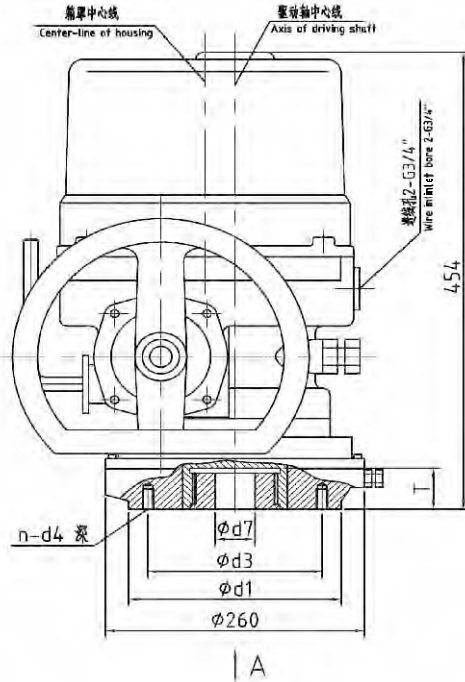
QT0-QT4 法兰结构及尺寸
QT0-QT4 Flange structure and dimensions



型号 Type	代号 Code	法兰号 Flange code	$\Phi d1$	$\Phi d3$	$\Phi d7$			b	L	T	T1	n-d4深 n-d4 depth					
					标准尺寸 Standard dimensions	预留尺寸 Preliminary dimensions	最大允许 Max permissible										
QT0	RA	F03	88	36	14 × 14 (方孔)	—	—	—	—	20	20	4-M5深8 4-M5 depth8					
		F05		50								4-M6深10 4-M6 depth10					
		F07		70								4-M8深12 4-M8 depth12					
QT1	RA	F05	102	50	—	10	22	—	—	30	43	4-M6深12 4-M6 depth12					
		F07		70								4-M8深12 4-M8 depth12					
	RB	2"	57.15	12.6	—	—	3	14	40	43	4-M6深10 4-M6 depth10						
		2.5"															
QT2	RA	F05	125	50	—	10	22	—	—	45	49	4-M6深12 4-M6 depth12					
		F07		70		15	32					46	4-M8深14 4-M8 depth14				
		F10		102		—	—					—	4-M8深15 4-M8 depth15				
	RB	2.5"	57.15	12.6	—	10	22	3	14	45	49	4-M6深10 4-M6 depth10					
		3"															
		4"										15.77	15	32	18.07	46	4-M8深15 4-M8 depth15
		5"										69.85			21.22		
6"	—	—	—	—	—	—	—	—	—	—							
QT3	RA	F10	145	102	—	15	32	—	—	46	52	4-M10深15 4-M10 depth15					
QT4	RA	F12	175	125	—	—	—	—	—	—	—	4-M12深18 4-M12 depth18					
		F14		140								4-M16深25 4-M16 depth25					
	RB	8"	88.9	22.10	—	20	42	5	24.4	58	63	4-M12深20 4-M12 depth20					
		10"						8	31.75								
		12"						—	—				—	—	—		
14"	107.95	31.6	—	—	—	8	34.9	—	—								

QT Quarter-turn Valve Electric Actuators NEUMAX

QT4/JS型外型图及法兰尺寸 QT4/JS Outline and flange dimension

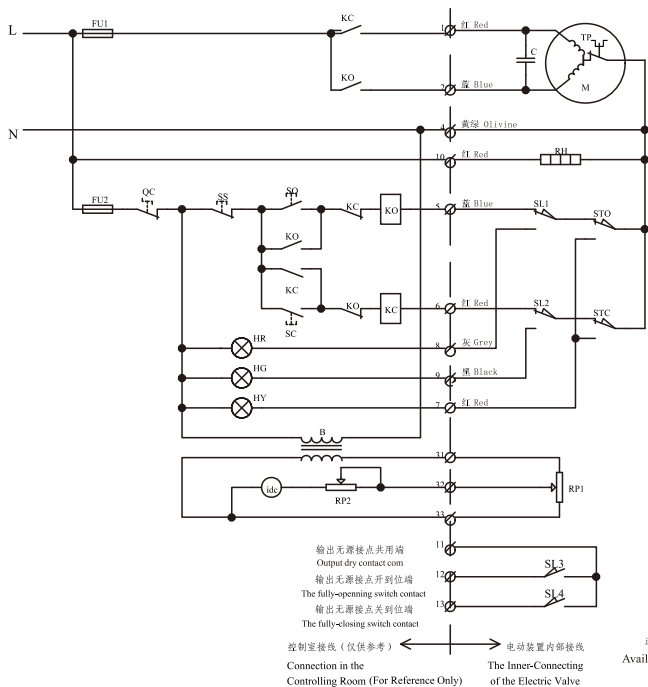


法兰型式 Flange type	法兰口径 或法兰号 Flange bore or flange code	Φd1	Φd3	Φd7			b	L	n-d4	T	h
				标准尺寸 Standard dimensions	预留尺寸 Preliminary dimensions	最大允许 Max Permissible					
RA	F14	175	140	/	/	/	/	/	4-M16	77	25
	F16	210	165						4-M20		
RB	16"	215	158.75	33.15	20	50	10	36.45	4-M18	77	25
	18"			38.00							
	20"			41.15							
RC	Q120	215	165	/	/	/	/	6-M16	/	/	

QT Quarter-turn Valve Electric Actuators NEUMAX

QT 系列基本型电气原理图 (AC220V)

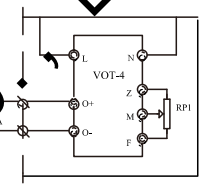
QT Series Basic Type Electrical Schematic Diagram (AC220V)



说明: Note:

- 1、本图表示电动阀门处于中间位置。
- 2、∅: 用户接线端子。
- 3、∅: Wiring Terminals for User to Connect.
- 3、元件表中“@”为选装件。
- 3、The “@” in Component List represents selecting element.

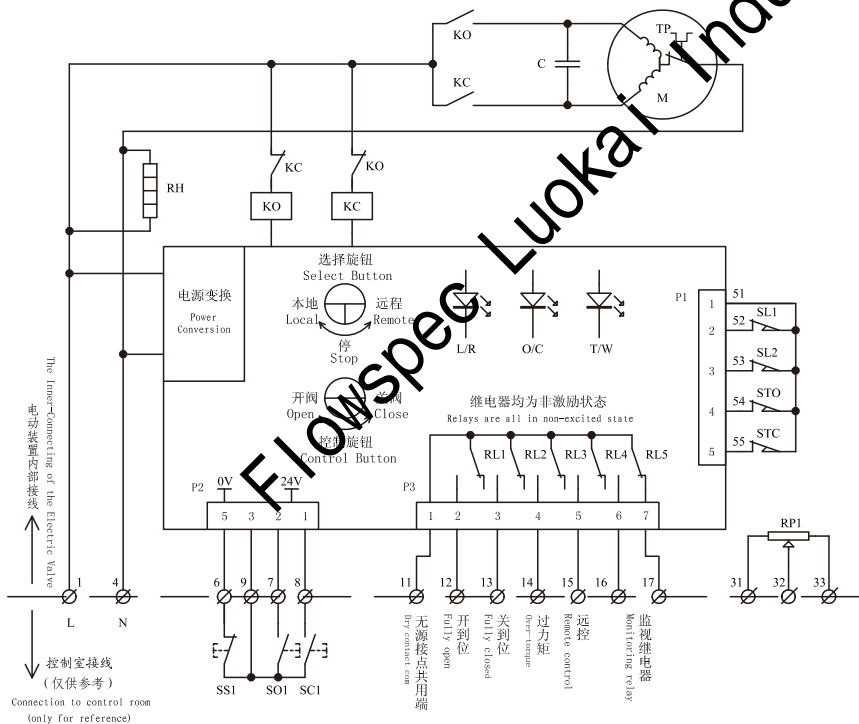
元 件 表 Component List			
8			
7	@VOT-4	4线制阀位串流发生器	4-Wire Valve Position Current Generator
6	RP1	位置反馈电位器	Valve Position Feedback Potentiometer
5	STO-STC	开、关向力矩限位开关	Opening/Closing torque Switch
4	SL1-SL4	开、关向行程限位开关	Opening/Closing Limit Switch
3	RH	空间加热器	Space Heater
2	C	电动机断路器	Motor Phase capacitor
1	M	阀门专用电机 (AC220V)	Valve Drive Motor (AC220V)
序号/	标号	名 称	Name
在电动装置上 In the electric actuator			



选装: 4~20mA 阀位输出电流 Available: 4-20mA valve position current

QT 系列整体型电气原理图 (AC220V)

QT Series Integral Type Electrical Schematic Diagram (AC220V)



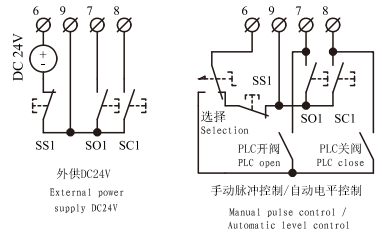
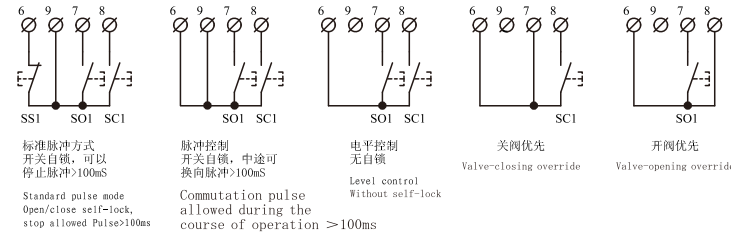
说明:

- 1、本图表示电动阀门处于中间位置, 状态继电器非激励。
- 2、∅: 用户接线端子。

Notes:

- 1、This diagram shows that the electric valve is at the middle position and the state relay is not excited.
- 2、∅: User's connection terminal.

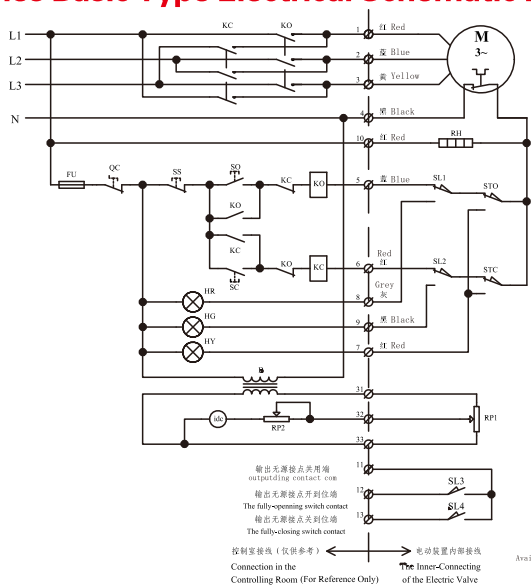
元 件 表 Components Table			
11	TP	电动机热保护开关	Over-heated protection switch
10	RH	空间加热器, 8.2k/20w	Room heater 8.2k/20w
9	RL1-5	状态输出继电器	State output relay
8	RP1	位置反馈电位器	Position feedback potentiometer
7	T/W	事故/电源指示灯	Malfunction power indicator
6	O/C	阀开/阀关指示灯	Opening/closing indicator
5	L/R	本地/远程工作指示灯	Local/remote indicator
4	STO STC	开、关向力矩限位开关	Opening/closing torque switch
3	SL1 SL2	开、关向行程限位开关	Opening/closing limit switch
2	KO KC	交流接触器	AC contactor
1	M	阀门专用电机 (AC220V)	Special motor (AC220V)
序号/	标号 Symbol	名 称	Name
在电动装置上 In the electric actuator			



QT Quarter-turn Valve Electric Actuators NEUMAX

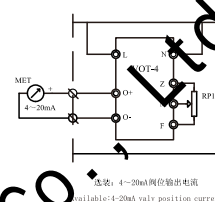
QT 系列基本型电气原理图 (AC380V)

QT Series Basic Type Electrical Schematic Diagram (AC380V)



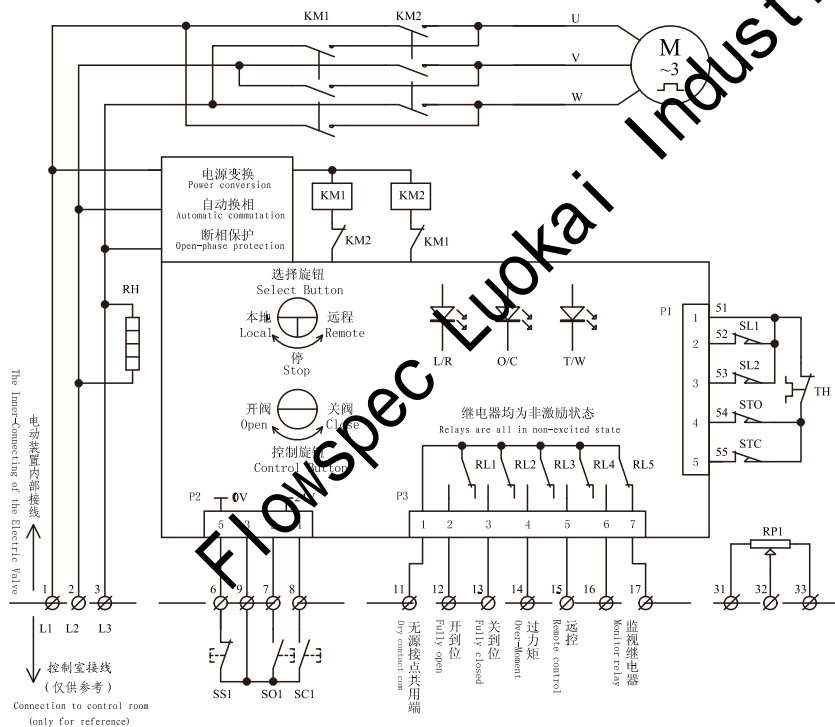
- 说明: Note:
1. 本图表示电动阀门处于中间位置。
1. The Valve is at the middle position in this diagram.
 2. ∅: 用户接线端子。
2. ∅: Wiring Terminals for User to Connect.
 3. 元件表中“@”为选装件。
3. The “@” in Component List represents selecting element.

元 件 表 Component List	
7	
6	四线制位置反馈装置 4-Wire Valve Position Current Generator
5	位置反馈电位器 Valve Position Feedback Potentiometer
4	STO-STC 开、关向力矩限位开关 Opening/Closing Torque Switch
3	SL1-SL4 开、关向行程限位开关 Opening/Closing Limit Switch
2	RH 空间加热器 Space Heater
1	M 阀门专用电机 (AC380V) Special-used Motor for the valve
序号	名称
在电动装置上 In the electric actuator	



QT 系列整体型电气原理图 (AC380V)

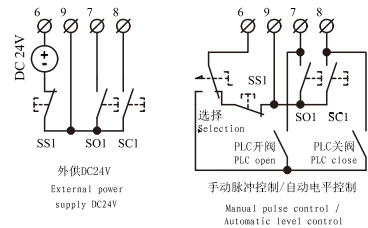
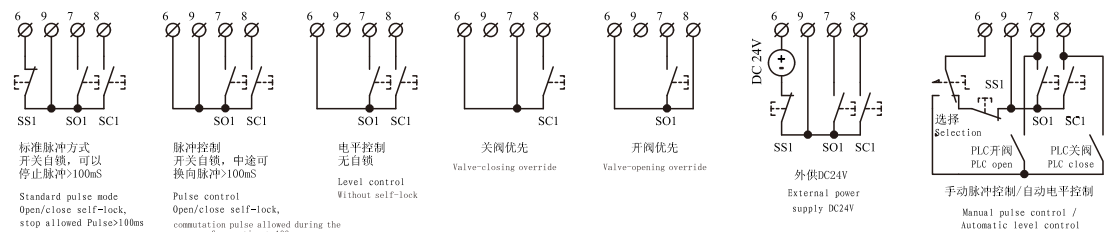
QT Series Integral Type Electrical Schematic Diagram (AC380V)



- 说明:
1. 本图表示电动阀门处于中间位置, 状态继电器非激励。
 2. ∅: 用户接线端子。

- Notes:
1. This diagram shows that the electric valve is at the middle position and the state relay is not excited.
 2. ∅: User's connection terminal.

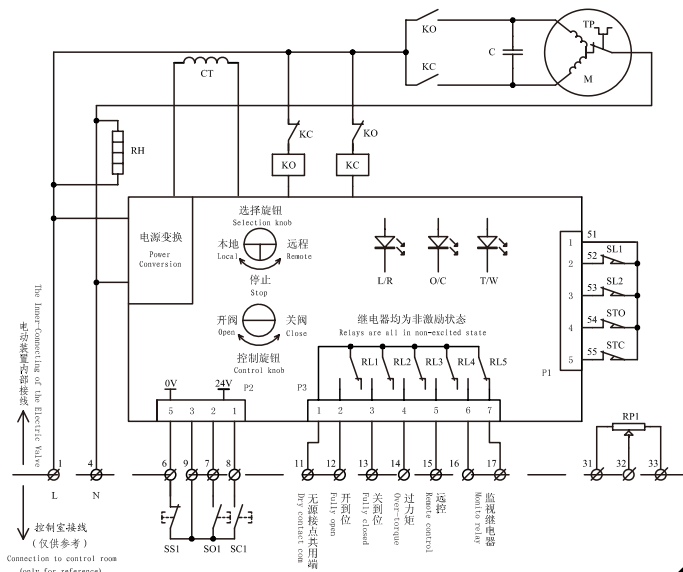
元 件 表 Components Table	
11	TH 电动机热保护开关 Motor over-heated protection switch
10	RH 空间加热器, 24k/25w Room heater 24k/25w
9	RL1-5 状态输出继电器 State output relay
8	RP1 位置反馈电位器 Position feedback potentiometer
7	T/W 事故/电源指示灯 Over-torque/Power Indicator
6	O/C 开阀/关阀指示灯 Opening/closing indicator
5	L/R 本地/远程工作指示灯 Local/remote indicator
4	STO STC 开、关向力矩限位开关 Opening/closing torque switch
3	SL1 SL2 开、关向行程限位开关 Opening/closing limitation switch
2	KM1-2 交流接触器 AC contactor
1	M 阀门专用电机 (AC380V) Special-used motor for the valve
序号No.	标号 Symbol
在电动装置上 In the electric actuator	



QT Quarter-turn Valve Electric Actuators NEUMAX

QT 系列防爆整体型电气原理图 (AC220V)

QT Series Explosive Integral Type Electrical Schematic Diagram (AC220V)



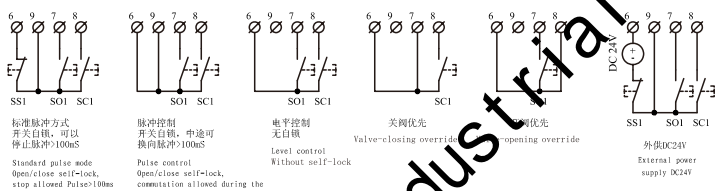
说明:

1. 本图表示电动阀门处于中间位置, 状态继电器非激励。
2. ∅: 用户接线端子。

Notes:

1. This diagram shows that the electric valve is at the middle position and the state relay is not excited.
2. ∅: User's connection terminal.

元件表		Components Table	
12	CT	电流互感器	Current sensor
11	TP	电动机热保护开关	Motor over-heated protection switch
10	RH	空间加热器 8.2k/20w	Room heater 8.2k/20w
9	RL1-5	状态输出继电器	State output relay
8	RP1	位置反馈电位器	Position feedback potentiometer
7	T/W	事故/电源指示灯	Malfunction/power indicator
6	O/C	阀开/阀关指示灯	Opening/closing indicator
5	L/R	本地/远程工作指示灯	Local/remote indicator
4	STO/STC	开、关方向限位开关	Opening/closing moment switch
3	SL1/SL2	开、关方向限位开关	Opening/closing limitation switch
2	KO/KC	交流接触器	AC contactor
1	M	阀门专用电机 (AC220V)	Special motor (AC220V)
序号No. (标号 Symbol)	名称	名称	Name
		在电动装置上	
		In the electric actuator	



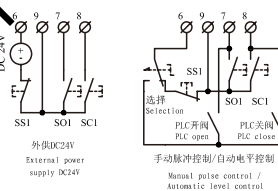
标准脉冲方式
开关自锁, 可以
停止脉冲100ms

脉冲控制
开关自锁, 中途可
换向脉冲100ms

电平控制
无自锁

阀门优先
Valve-closing override

开阀优先
Valve-opening override

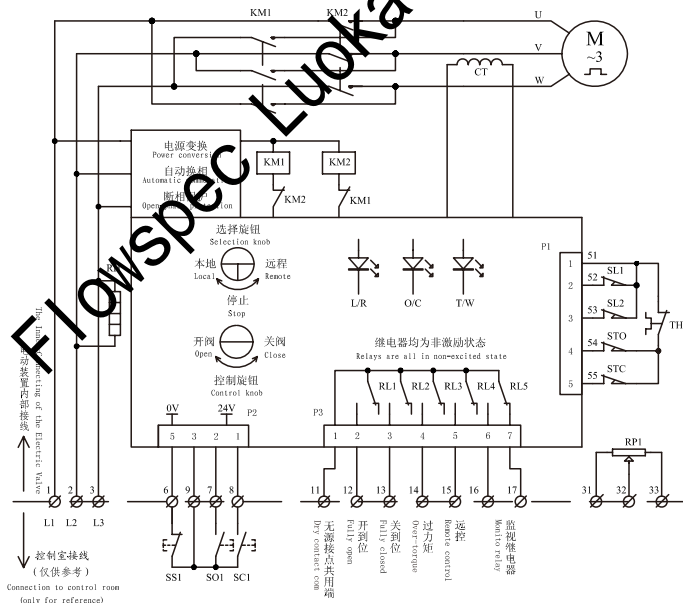


外供DC24V
External power
supply DC24V

手动脉冲控制/自动电平控制
Manual pulse control /
Automatic level control

QT 系列防爆整体型电气原理图 (AC380V)

QT Series Explosive Integral Type Electrical Schematic Diagram (AC380V)



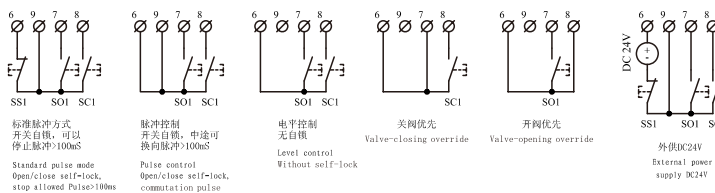
说明:

1. 本图表示电动阀门处于中间位置, 状态继电器非激励。
2. ∅: 用户接线端子。

Notes:

1. This diagram shows that the electric valve is at the middle position and the state relay is not excited.
2. ∅: User's connection terminal.

元件表		Components Table	
12	CT	电流互感器	Current sensor
11	TH	电动机热保护开关	Motor over-heated protection switch
10	RH	空间加热器 24k/25w	Room heater 24k/25w
9	RL1-5	状态输出继电器	State output relay
8	RP1	位置反馈电位器	Position feedback potentiometer
7	T/W	事故/电源指示灯	Malfunction/power indicator
6	O/C	阀开/阀关指示灯	Opening/closing indicator light
5	L/R	本地/远程工作指示灯	Local/remote indicator light
4	STO/STC	开、关方向限位开关	Opening/closing moment switch
3	SL1/SL2	开、关方向限位开关	Opening/closing limitation switch
2	KM1-2	交流接触器	AC contactor
1	M	阀门专用电机 (AC380V)	Special-used motor
序号No. (标号 Symbol)	名称	名称	Name
		在电动装置上	
		In the electric actuator	



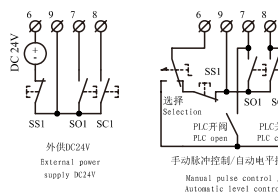
标准脉冲方式
开关自锁, 可以
停止脉冲100ms

脉冲控制
开关自锁, 中途可
换向脉冲100ms

电平控制
无自锁

阀门优先
Valve-closing override

开阀优先
Valve-opening override



外供DC24V
External power
supply DC24V

手动脉冲控制/自动电平控制
Manual pulse control /
Automatic level control

★ ★ 订 货 须 知 ★ ★

用户订货请说明如下内容:

- 阀门所需转矩(N·m), 转速(r/min)
- 阀杆直径(mm)
- 与阀门连接尺寸、形式
- 产品使用环境
- 电气控制要求
- 是否需要控制器
- 各种特殊要求

Information Required with Order

The following items shall be clear when ordering:

- Torque (N·m) and speed (r/min) of the valve.
- Valve stem diameter(mm).
- Connection dimension and mode with valve.
- Working conditions for the product.
- Requirement of electric control.
- Whether the controller is required.
- All the special requirements.

天津百利二通机械有限公司

TIANJIN BAILI ERTONG MACHINERY CO.,LTD

销售电话: (022) 26750325、26750313

Sales Tel 84911766、26750320

销售传真: (022) 26330054、26750339

Sales Fax 26770821

技术咨询Tel:022-26750320、84911877

邮箱E-mail:scb@tet.cn

网址: <http://www.tet.cn>

地址: Add:中国天津空港经济区航海路180号B座

Block B, No.180 Hanghai Road, Airport

Economical Zone, Tianjin, China

邮编 P.C: 300300