



Z73X Unidirectional seal Knife Gate Valve

Model: Z73X-10

Working Pressure: DN50-DN100 16bar
 DN125-DN200 10bar
 DN250-DN400 7bar
 DN450-DN550 5bar
 DN600-DN700 3bar
 DN800-DN900 2bar
 DN1000-DN1400 1bar

Design Standard: MSS SP-81

Flange Standard: DIN PN10, PN16, 150LB, JIS 10K, TABLE E/D

Face to Face: MSS SP-81

Testing Standard: API-598

Transmission: manual, electric, pneumatic, hydraulic, sprocket, electro-hydraulic, gear

Main material: WCB, F55, F53, 2205, CF3M, CF8M, CF8

Wedge material: F55, F53, 2205, SS310, SS316L, SS316, SS304

Sealing material: NBR, EPDM, FKM, metal

Packing: high water-based rubber packing graphite wheel

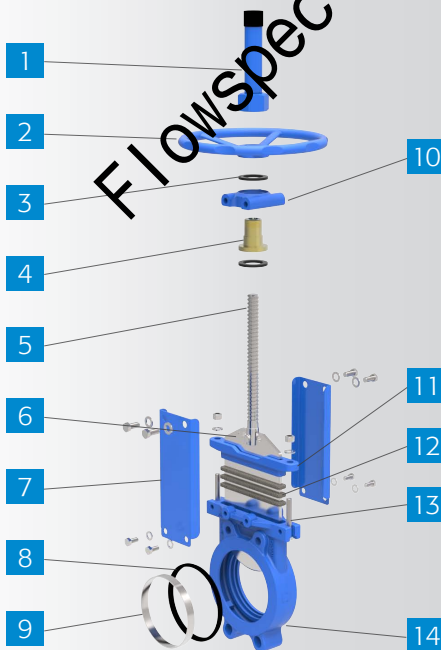
Applicable medium: pulp, cement slurry, gold ore powder, coal slurry, chemical treatment of sewage, sedimentation tanks, asphalt, acid and other liquids and other media.

Features:

- # Unidirectional sealing
- # 1PC Body design
- # Full port design
- # Mixed with a variety of materials packing

Product Description:

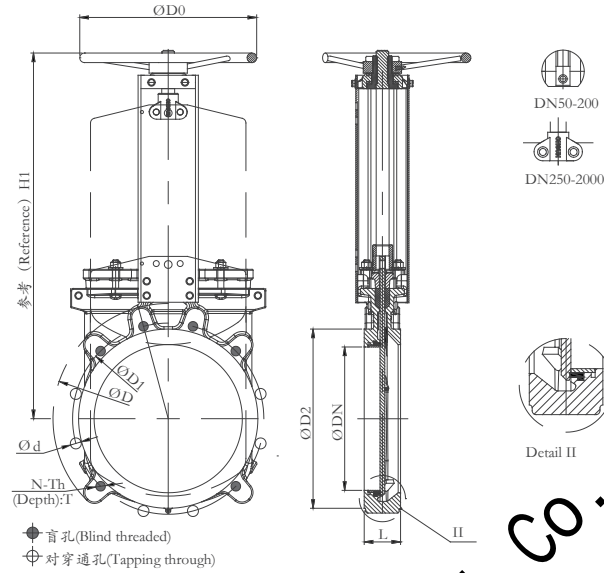
Z73 series knife gate valve is with renewable rubber seat knife gate structure, its sealing principle is mainly by closely connection between gate and rubber seals. Its main characters is that the rubber sealing ring is set in seat's groove and is locked by metal seat, which will prevent rubber seal off when opening and closing the valve. If the seal is broken, you can remove the metal seat and replace the rubber seal, which will greatly improve valve working efficiency. This valve is a cost-effective with high-performance. The series of knife gate valve can be equipped with pneumatic actuators, in order to meet the requirements of different industrial and mining use.



Code	Name	Material	QTY
1	Handle Cover	Q235+Painting	1
2*	Hand Wheel	GGG40	1
3	Bearing	ZChSnSb10-6	2
4	Stem Nut	Brass	1
5	Stem	2Cr13/SS304/SS316	1
6	Disc	SS304/SS316/F55/2205	1
7	Yoke	Q235	1
8	Seat	EPDM/NBR/PTFE/Metal	1
9	Seat Cover	Q235/SS304/SS316	1
10	Yoke Head	GGG40	1
11	Packing Gland	WCB/CF8	1
12	Packing	Aramid PRFE	3-5
13	Bolt	Fe+Zn With Painting/SS304	N
14	Body	WCB/GGG40/CF8/CF8M	1

*electric, pneumatic, hydraulic, sprocket, electro-hydraulic, gear **available**

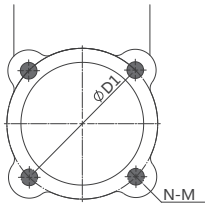
Dimension



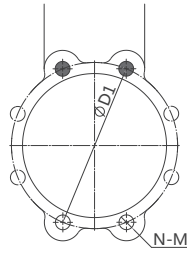
unit:mm

DIN2632 PN10										ANSI 150LB								
DN	L	D	D1	D2	DO	N-Th	d	H1		DN	L	D	D1	D2	DO	N-Th	d	H1
50	48	165	125	99	180	4-M16	Ø18	260		50	48	152	121	92	180	4-5/8"	Ø19	260
65	48	185	145	118	200	4-M16	Ø18	292		65	48	178	140	105	200	4-5/8"	Ø19	292
80	51	200	160	132	200	8-M16	Ø18	320		80	51	191	153	127	200	4-5/8"	Ø19	320
100	51	220	180	156	240	8-M16	Ø18	358		100	51	229	191	157	240	8-5/8"	Ø19	358
125	57	250	210	184	260	8-M16	Ø18	395		125	57	254	216	186	260	8-3/4"	Ø22	395
150	57	285	240	211	280	8-M20	Ø23	450		150	57	279	242	216	280	8-3/4"	Ø22	450
175	57	305	265	237	280	12-M20	Ø23	504		175	57	279	242	216	280	8-3/4"	Ø22	450
200	70	340	295	266	300	8-M20	Ø23	532		200	70	343	299	270	300	8-3/4"	Ø22	532
250	70	395	350	318	320	12-M20	Ø23	670		250	70	406	362	324	320	12-7/8"	Ø25	670
300	76	445	400	370	350	12-M20	Ø23	758		300	76	483	432	381	350	12-7/8"	Ø25	758
350	76	505	460	429	400	16-M20	Ø23	857		350	76	533	476	413	400	12-1"	Ø29	857
400	89	565	515	480	450	16-M24	Ø27	946		400	89	597	540	470	450	16-1"	Ø29	946
450	89	615	565	530	500	20-M24	Ø27	1023		450	89	635	578	533	500	16-1 1/8"	Ø32	1023

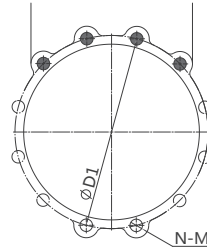
PN10 Threaded hole and Tapping hole



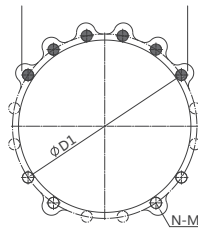
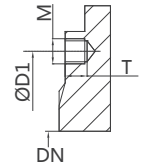
DN50-DN65



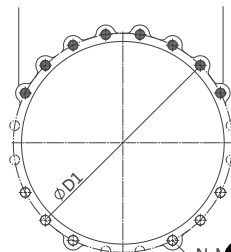
DN80-DN200



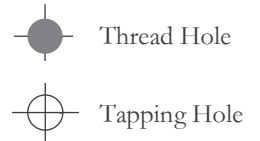
DN225-DN300



DN350-DN400

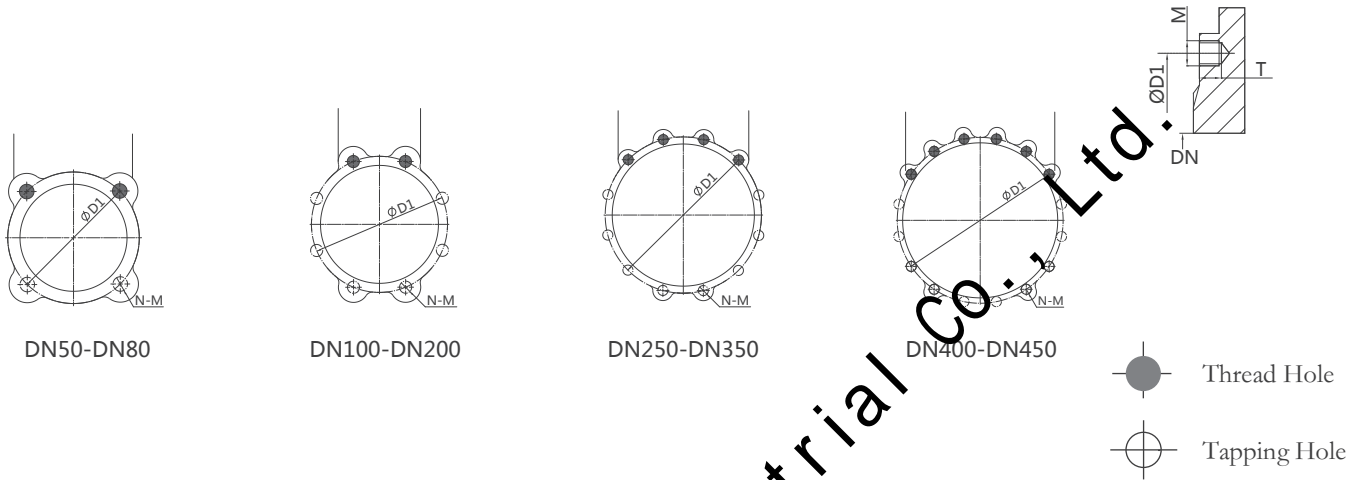


DN450



DN	D1	N	PN10		T	Thread Hole	Tapping Hole
			M				
50	125	4	M16		13	4	0
65	145	4	M16		13	4	0
80	160	8	M16		13	2	6
100	180	8	M16		13	2	6
125	210	8	M16		16	2	6
150	240	8	M16		16	2	6
200	295	8	M20		20	2	6
225	310	12	M20		20	4	8
250	350	12	M20		20	4	8
300	400	12	M20		20	4	8
350	460	16	M20		20	6	10
400	515	16	M24		24	6	10
450	565	20	M24		24	8	12

150LB Threaded hole and Tapping hole



DN	D1	N	ANSI 150LB M	T	Thread Hole	Tapping Hole
2"(DN50)	121	4	M5/8-11	13	2	2
2-1/2"(DN65)	140	4	M5/8-11	13	2	2
3"(DN80)	153	4	M5/8-11	13	2	2
4"(DN100)	191	8	M5/8-11	13	2	6
5"(DN125)	216	8	M3/4-10	16	2	6
6"(DN150)	242	8	M3/4-10	16	2	6
8"(DN200)	289	8	M3/4-10	20	2	6
10"(DN250)	362	12	M7/8-9	20	4	8
12"(DN300)	432	12	M7/8-9	20	4	8
14"(DN350)	476	12	M1-8	20	4	8
16"(DN400)	540	16	M1-8	24	6	10
18"(DN450)	578	16	M1 1/8-7	24	6	10