

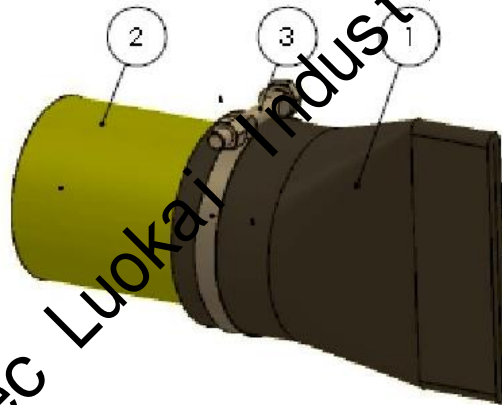


Slip-on Type Duckbill Check Valve with Straight Bill



Introduction

RCV81 model of slip-on type duckbill check valve is mounted onto the pipe with clamp. We adopt one whole piece of rubber construction makes it's sealing much better. RCV81 model of slip-on duckbill check valve is applicable widely to rain water, river water, sea water, slurry and industrial sewage. Its sizes are normally from DN20 (3/4") to DN300 (12").

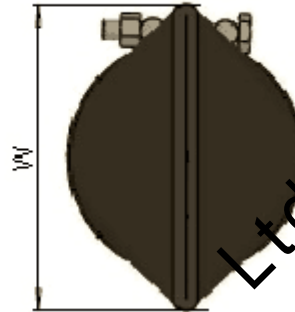
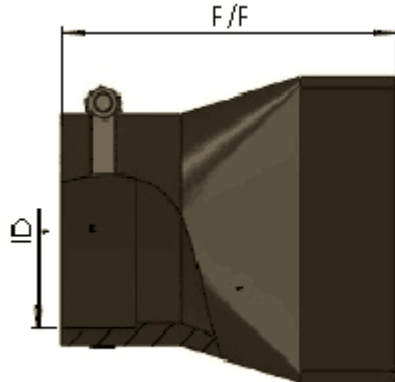


Main Parts and Materials

Item	Parts	Materials
1	Valve	<ol style="list-style-type: none">1. Pure Gum Rubber2. Neoprene3. Chlorobutyl4. Buna-N5. Polyurethane6. Hypalon7. Viton8. EPDM
2	Pipe	<ol style="list-style-type: none">1. Plastic Pipe2. Steel Pipe3. Stainless Steel Pipe



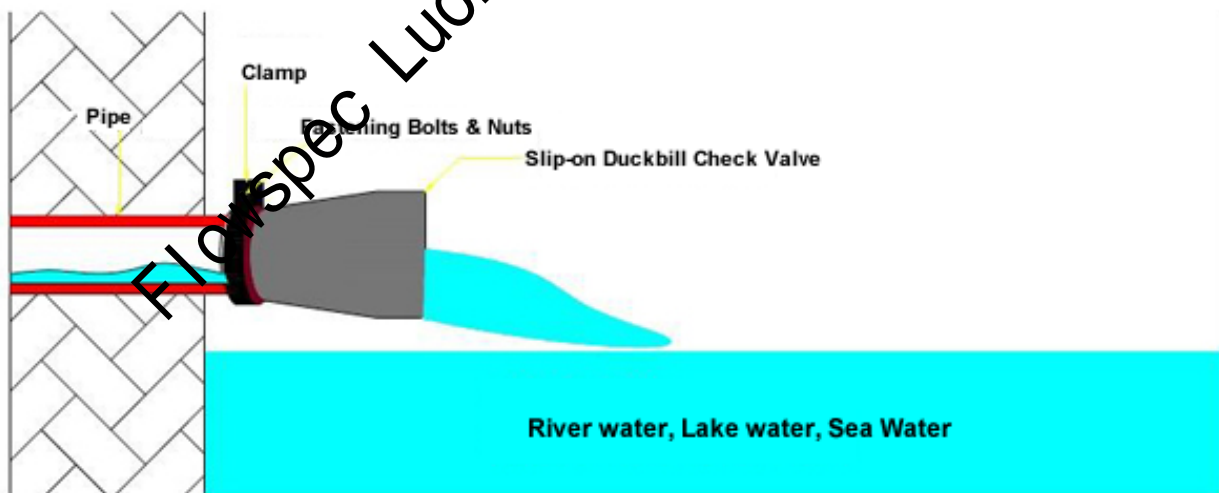
		4. Cement Pipe
3	Clamp	1. Steel 2. Stainless Steel



Main Connection Dimensions

DN(mm)	20	25	32	40	50	65	80	100	125	150	200	250	300
ID	28	32	42	50	62	77	92	112	138	159	219	273	325
F/F	90	90	96	107	120	140	167	190	224	260	330	370	475
W	37	48	57	67	86	116	143	175	212	254	350	400	435
Weight (Kgs)	0.1	0.13	0.17	0.2	0.24	0.35	0.7	1.0	1.4	2.63	5.2	9.0	14.0

Slip-on Duckbill Check Valve Drainage Diagramm



Notes:

1. Dimensions are approximate and may change due to pipe dimension changes, inlet pressure, back pressure and flow rates.
2. The weight is approximate without clamp.

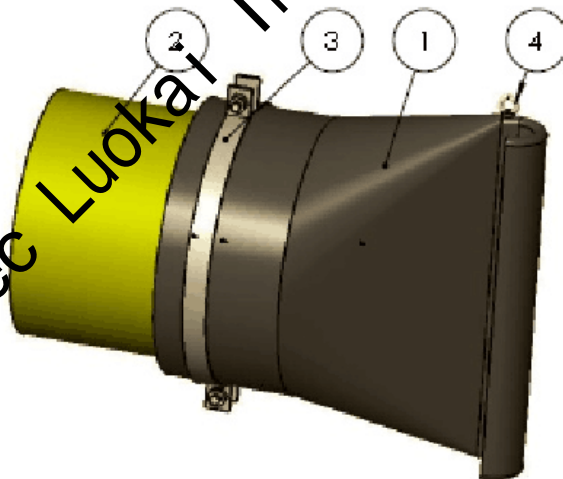


Slip-on Type Duckbill Check Valve with Curved Bill



Introduction

RCV82 model of slip-on type duckbill check valve is mounted onto the pipe with clamp. Its shape and dimensions can be changed easily according to customer's requests. RCV82 model of slip-on duckbill check valve is applicable widely to rain water, river water, sea water, slurry and industrial sewage. Its sizes are normally from DN150 (6") to DN3000 (120").

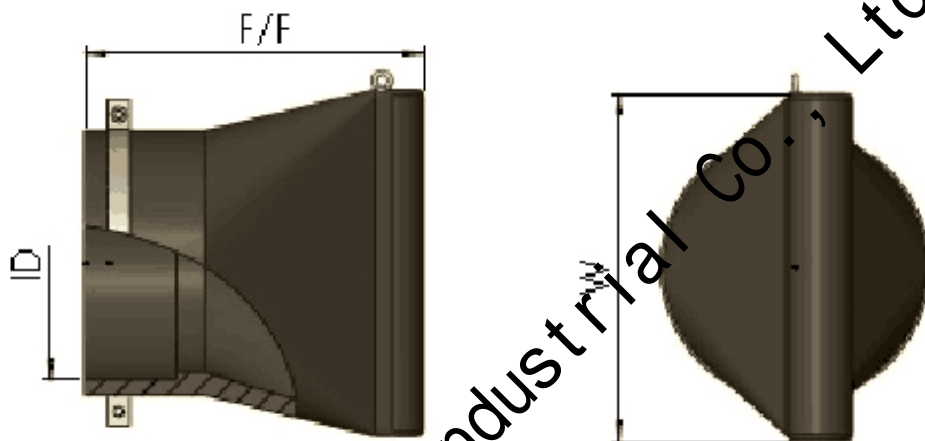


Main Parts and Materials

Item	Parts	Materials
1	Valve	1. Pure Gum Rubber 2. Neoprene 3. Chlorobutyl 4. Buna-N 5. Polyurethane 6. Hypalon



		7. Viton 8. EPDM
2	Pipe	1. Plastic Pipe 2. Steel Pipe 3. Stainless Steel Pipe 4. Cement Pipe
3	Clamp	1. Steel 2. Stainless Steel
4	Eye Bolt	1. Steel 2. Stainless Steel

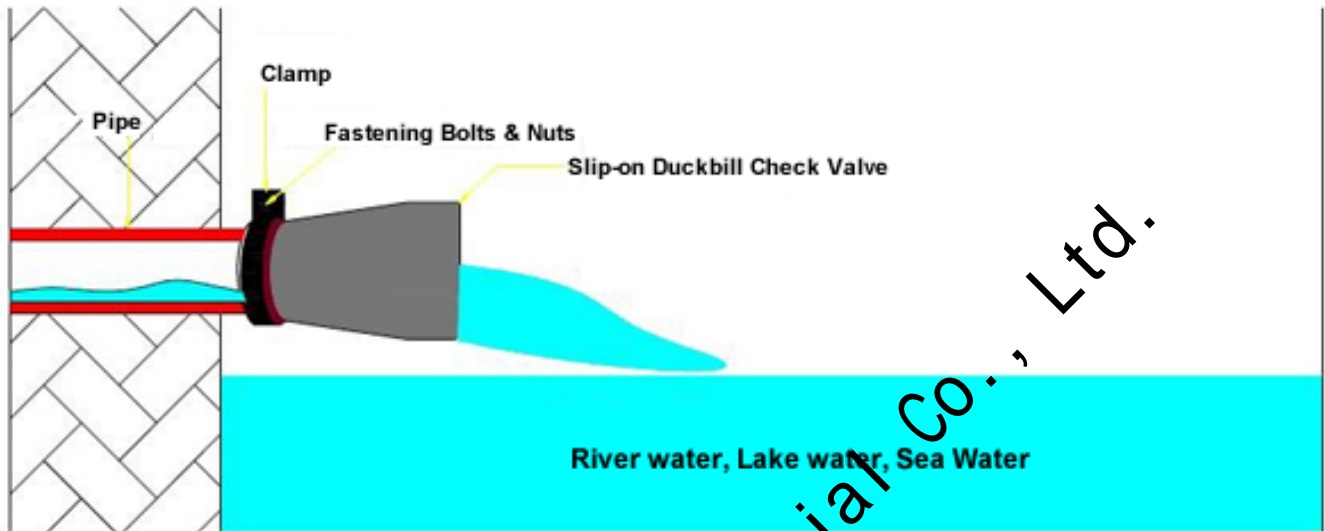


Main Connection Dimensions

DN(mm)	150	200	250	300	350	400	450	500	600	700	800	900	1000
ID	159	219	273	325	377	426	480	530	630	720	820	920	1020
F/F	260	330	376	475	530	630	670	737	862	932	1060	1115	1260
W	254	330	400	435	490	605	645	750	880	950	1220	1320	1430
Weight (Kgs)	2.6	5.2	9.0	14.0	18.1	26.4	28.8	34.4	67.6	83.0	127.0	155.0	173.0
DN(mm)	1200	1400	1500	1600	1800	2000	2200	2400	2600	2800	3000		
ID	1220	1420	1520	1620	1820	2020	2220	2420	2630	2830	3040		
F/F	1490	1562	1557	1670	1975	2115	2542	3121	3450	3760	3900		
W	1620	1960	2060	2140	2700	2860	3500	3838	4040	4350	4680		
Weight (Kgs)	252	330	410	523	613	765	820	942	1040	1148	1260		



Slip-on Duckbill Check Valve Drainage Diagramm



Notes:

1. Dimensions are approximate and may change due to pipe dimension changes, inlet pressure, back pressure and flow rates.
2. The weight is approximate without clamp.

Flowspec Luokai Industrial Co., Ltd.

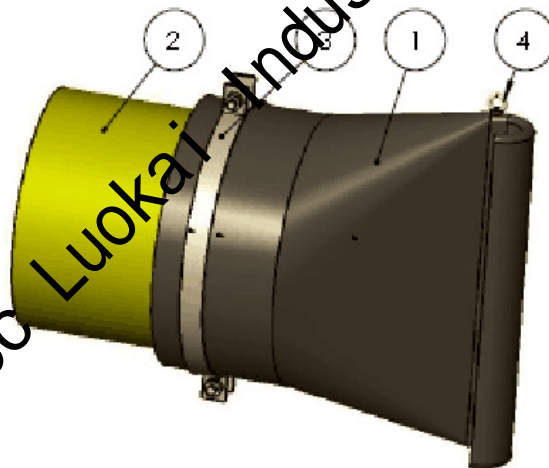


Slip-on Type Duckbill Check Valve with Flat Bill



Introduction

RCV83 model of slip-on type duckbill check valve is mounted onto the pipe with clamp. Its shape and dimensions can be changed easily according to customer's requests. RCV83 model of slip-on duckbill check valve is applicable widely to rain water, river water, sea water, slurry and industrial sewage. Its sizes are normally from DN100 (4") to DN2400 (96").

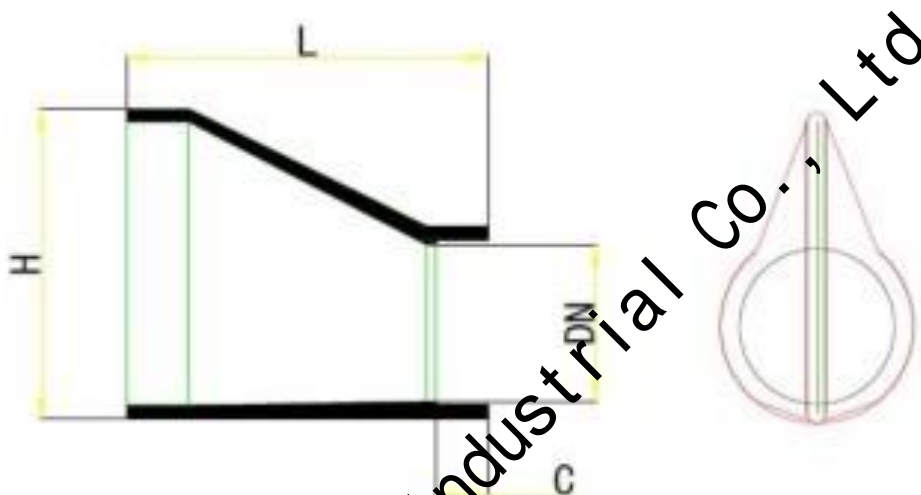


Main Parts and Materials

Item	Parts	Materials
1	Valve	<ol style="list-style-type: none">1. Pure Gum Rubber2. Neoprene3. Chlorobutyl4. Buna-N5. Polyurethane6. Hypalon7. Viton8. EPDM



2	Pipe	<ol style="list-style-type: none"> 1. Plastic Pipe 2. Steel Pipe 3. Stainless Steel Pipe 4. Cement Pipe
3	Clamp	<ol style="list-style-type: none"> 1. Steel 2. Stainless Steel
4	Eye Bolt	<ol style="list-style-type: none"> 1. Steel 2. Stainless Steel

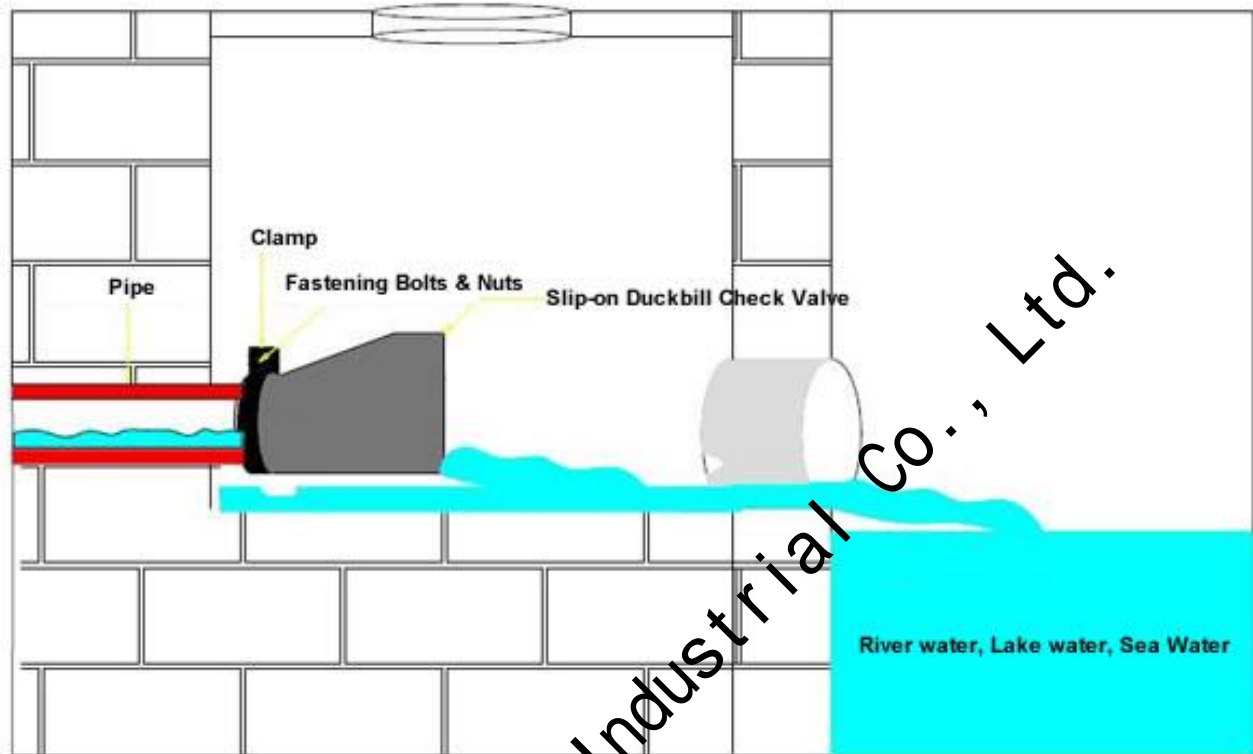


Main Connection Dimensions

DN(mm)	100	125	150	200	250	300	350	400	450	500	600	700
C	50	50	50	50	75	100	100	125	125	205	205	230
L	190	224	260	330	370	475	530	630	670	737	862	932
H	175	222	254	350	400	435	490	605	645	750	880	950
Weight (Kgs)	0.9	1.2	2.2	4.7	8.5	13	17	25	26	31.4	65.6	77
DN(mm)	800	900	1000	1200	1400	1500	1600	1800				
C	230	255	255	250	310	330	350	400				
L	1060	1115	1260	1490	1562	1557	1670	1975				
H	1220	1320	1430	1620	1960	2060	2140	2700				
Weight (Kgs)	120	147	164	240	318	390	500	590				



Slip-on Duckbill Check Valve Drainage Diagramm



Notes:

1. Dimensions are approximate and may change due to pipe dimension changes, inlet pressure, back pressure and flow rates.
2. The weight is approximate without clamp.

Flowspec Luokai Industrial Co., Ltd.