



LCH Folding Type Pipe Repair Clamp



LCH-S



LCH-L

SPECIFICATIONS

- Features: flexible connection, strong & anti-corrosive, no need welding, no fire risk, space saving, suitable for any pipe, easy installation.
- Application field: surface pipe, underground engineering, ship building, offshore oil platform, water supply, coal gas supply, natural gas supply, power, industries, sewage treatment & maintenance.
- Application pipeline: crude oil pipeline, gas pipeline, natural gas pipeline, water supply & drainage pipeline, fuel oil pipeline, airline pipeline, automobile pipeline, lubricating oil pipeline, sludge pipeline, suction pipeline, water power pipeline, sea water pipeline, fresh water pipeline, turbine pipeline, air conditioning pipeline, firefighting pipeline, ventilation pipeline, compressed air pipeline.
- Versatility: Apply to any pipe, to connect different materials of different axial, different diameter pipe, for quick repairs.
- Economy: The first pipe needn't deal with, can be connected, thin-walled, thick-walled tube, the installation is simple, a significant reduction in construction costs.
- Reliability: It can compensate the axial displacement and the angle crab, the apron lip-like structure can be increased with the pressure enhanced sealing effect.

FAST INSTALLATION

- Light weight
- Few bolts
- Low torque requirement

ACCOMMODATES

- Angular deflection
- Pipes with gaps between pipe ends



- Connection of pipe with movement

- Cracked pipe

COMPATIBLE PIPE MATERIALS

- Steel
- Cast iron / Ductile Iron
- Asbestos Cement
- Concrete
- PVC
- HDPE

MATERIALS

- Shell: 304 Stainless steel (other materials available upon request)

Sidebars: 304 Stainless steel (other materials available upon request)

- Bolts: 304 Stainless steel (other materials available upon request)

Gasket Bridge: 304 Stainless steel (other materials available upon request)

- Gasket: •EPDM (-20~+130°C water, air, dust, steam)
- NBR (-20~+100°C natural gas, coal gas, oil, other hydrocarbon)
- SILICON (-75~+200°C anti-exposure, coal gas, oil, other hydrocarbon)
- VITON (-95~+300°C anti-heat, anti-corrosive)

SIZE RANGE

- 15A-2000A (other sizes available upon request)

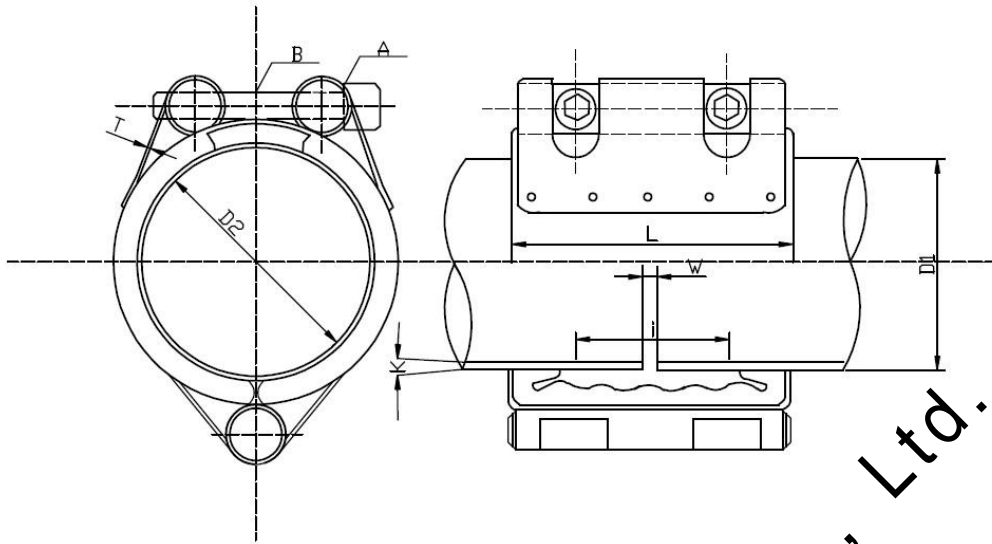
STANDARD

- Complies with DIN86128-1/3, AWWA (other sizes available upon request)

PRESSURE TESTING

- 1.5 x PB

Flowspec Luokai Industrial Co., Ltd.



LCH-S

MODEL	D1	D2	ΦB	ΦA	L	I	T	W.P.	PRE-TIGHTENING FORCE
	(MM)	(MM)	(MM)	(MM)	(MM)	(MM)	(MM)	(BAR)	(BAR)
LCH-S 15A	21.7	21-23	M6 × 45L × 2	10	57	33	0.8	18	30-60
LCH-S 20A	27	26-28	M6 × 45L × 2	10	57	33	0.8	18	30-60
LCH-S 25A	34	33-35	M6 × 45L × 2	10	57	33	0.8	18	30-60
LCH-S 32A	42.7	42-44	M8 × 55L × 2	12	57	33	0.8	18	50-80
LCH-S 40A	48.6	47-49	M8 × 55L × 2	12	57	33	0.8	18	50-80
LCH-S 50A	60.5	58-61	M10 × 75L × 2	16	80	46	1	16	80-100
LCH-S 65A	76.3	75-78	M10 × 75L × 2	16	80	46	1	16	80-100
LCH-S 80A	89.1	88-92	M12 × 90L × 2	18	107	65	1.2	14	120-150
LCH-S 100A	114.3	113-117	M12 × 90L × 2	18	107	65	1.2	14	120-150
LCH-S 125A	139.8	138-142	M14 × 110L × 2	22	116	71	1.5	12	180-250
LCH-S 150A	165.2	163-167	M14 × 110L × 2	22	116	71	1.5	12	180-250
LCH-S 200A	216.3	214-219	M16 × 130L × 2	28	155	80	2	10	250-400
LCH-S 250A	267.3	265-270	M16 × 130L × 2	28	155	80	2	10	250-400
LCH-S 300A	318.5	316-321	M16 × 140L × 2	28	155	80	2	8	500-800
LCH-S 350A	355.6	353-358	M16 × 140L × 2	28	155	80	2	8	500-800
LCH-S 400A	406.4	403-408	M18 × 150L × 2	30	155	80	2	6	800-1000
LCH-S 450A	457.2	455-461	M18 × 150L × 2	30	155	80	2	6	800-1000
LCH-S 500A	508	505-512	M18 × 150L × 2	30	155	80	2	6	1000-1200



LCH-L

MODEL	D1	D2	ΦB	ΦA	L	I	T	W.P.	PRE-TIGHTENING FORCE
	(MM)	(MM)	(MM)	(MM)	(MM)	(MM)	(MM)	(BAR)	(BAR)
LCH-L 15A	21.7	21-23	M8 × 45L × 3	12	100	70	0.8	18	30-60
LCH-L 20A	27.0	26-28	M8 × 45L × 3	12	100	70	0.8	18	30-60
LCH-L 25A	34.0	33-35	M8 × 45L × 3	12	100	70	0.8	18	30-60
LCH-L 32A	42.7	42-44	M8 × 55L × 3	12	100	70	0.8	18	50-80
LCH-L 40A	48.6	47-49	M8 × 55L × 3	12	100	70	0.8	18	50-80
LCH-L 50A	60.5	58-61	M10 × 75L × 3	16	139	46	1.0	16	80-100
LCH-L 65A	76.3	75-78	M10 × 75L × 3	16	139	46	1.0	16	80-100
LCH-L 80A	89.1	88-92	M12 × 90L × 32	18	203	65	1.2	14	120-150
LCH-L 100A	114.3	113-117	M12 × 90L × 3	18	203	65	1.2	14	120-150
LCH-L 125A	139.8	138-142	M14 × 110L × 3	22	204	71	1.5	12	180-250
LCH-L 150A	165.2	163-167	M14 × 110L × 3	22	204	71	1.5	12	180-250
LCH-L 200A	216.3	214-219	M16 × 130L × 3	28	255	80	2.0	10	250-400
LCH-L 250A	267.3	265-270	M16 × 130L × 3	28	255	80	2.0	10	250-400
LCH-L 300A	318.5	316-321	M16 × 140L × 3	28	255	80	2.0	8	500-800
LCH-L 350A	355.6	353-358	M16 × 140L × 3	28	255	80	2.0	8	500-800
LCH-L 400A	406.4	403-408	M18 × 150L × 3	30	255	80	2.0	6	800-1000
LCH-L 450A	457.2	455-461	M18 × 150L × 3	30	255	80	2.0	6	800-1000
LCH-L 500A	508.0	505-512	M18 × 150L × 3	30	255	80	2.0	6	1000-1200

Notes

As we are constant endeavoring to improve the performance of our equipment.

The company reserves the right to make alteration from time to time and equipment differ from that detailed in this brochure.